

# Технические характеристики

## По вопросам продаж и поддержки обращайтесь:

Алматы (7273)495-231  
Ангарск (3955)60-70-56  
Архангельск (8182)63-90-72  
Астрахань (8512)99-46-04  
Барнаул (3852)73-04-60  
Белгород (4722)40-23-64  
Благовещенск (4162)22-76-07  
Брянск (4832)59-03-52  
Владивосток (423)249-28-31  
Владикавказ (8672)28-90-48  
Владимир (4922)49-43-18  
Волгоград (844)278-03-48  
Вологда (8172)26-41-59  
Воронеж (473)204-51-73  
Екатеринбург (343)384-55-89  
Иваново (4932)77-34-06  
Ижевск (3412)26-03-58  
Иркутск (395)279-98-46  
Казань (843)206-01-48

Россия +7(495)268-04-70

Калининград (4012)72-03-81  
Калуга (4842)92-23-67  
Кемерово (3842)65-04-62  
Киров (8332)68-02-04  
Коломна (4966)23-41-49  
Кострома (4942)77-07-48  
Краснодар (861)203-40-90  
Красноярск (391)204-63-61  
Курск (4712)77-13-04  
Курган (3522)50-90-47  
Липецк (4742)52-20-81  
Магнитогорск (3519)55-03-13  
Москва (495)268-04-70  
Мурманск (8152)59-64-93  
Набережные Челны (8552)20-53-41  
Нижний Новгород (831)429-08-12  
Новокузнецк (3843)20-46-81  
Ноябрьск (3496)41-32-12  
Новосибирск (383)227-86-73

Киргизия +996(312)-96-26-47

Омск (3812)21-46-40  
Орел (4862)44-53-42  
Оренбург (3532)37-68-04  
Пенза (8412)22-31-16  
Петрозаводск (8142)55-98-37  
Псков (8112)59-10-37  
Пермь (342)205-81-47  
Ростов-на-Дону (863)308-18-15  
Рязань (4912)46-61-64  
Самара (846)206-03-16  
Саранск (8342)22-96-24  
Санкт-Петербург (812)309-46-40  
Саратов (845)249-38-78  
Севастополь (8692)22-31-93  
Симферополь (3652)67-13-56  
Смоленск (4812)29-41-54  
Сочи (862)225-72-31  
Ставрополь (8652)20-65-13  
Сургут (3462)77-98-35

Казахстан +7(7172)727-132

Сыктывкар (8212)25-95-17  
Тамбов (4752)50-40-97  
Тверь (4822)63-31-35  
Тольятти (8482)63-91-07  
Томск (3822)98-41-53  
Тула (4872)33-79-87  
Тюмень (3452)66-21-18  
Ульяновск (8422)24-23-59  
Улан-Удэ (3012)59-97-51  
Уфа (347)229-48-12  
Хабаровск (4212)92-98-04  
Чебоксары (8352)28-53-07  
Челябинск (351)202-03-61  
Череповец (8202)49-02-64  
Чита (3022)38-34-83  
Якутск (4112)23-90-97  
Ярославль (4852)69-52-93

## SELECTION OF OUR TECHNOLOGIES



### MULTI LIGHT™ TECHNOLOGY

Illumination suitable for observation using variable LED light intensity.



### WATER JET TECHNOLOGY

The Water Jet function supports constant visualisation for both diagnostic and therapeutic procedures.



### LCI TECHNOLOGY

Increased contrast in red colour leads to improved visibility of abnormalities, inflammation and delineation.



### COLOASSIST TECHNOLOGY

Flexible adjustment to be expected for easier insertion in addition to advanced force transmission and adaptive bending.



### BLI TECHNOLOGY

The combination of special light wavelengths results in improved contrast imaging for characterisation.



### DICOM TECHNOLOGY

The goal of the DICOM Standard is to achieve compatibility and improve workflow efficiency between imaging systems and other information systems.



### CAD EYE

This function, developed utilising AI technology, supports colonic polyp detection and characterisation during colonoscopy.



### MULTI ZOOM TECHNOLOGY

Easy-to-control optical magnification in stepwise or continuous magnification mode.



### CMOS TECHNOLOGY

Brilliant image transmission with reduced noise thanks to a CMOS-chip positioned directly in the tip.



### ANTI-BLUR FUNCTION

The clearest image among multiple images is automatically selected.



### FICE TECHNOLOGY

Provides the possibility to enhance slight colour differences such as vascular and mucosal patterns without tissue staining. The procedure digitally selects three wavelengths of light and displays reconstructed images.



### CLOSE FOCUS

Observation up to 2 mm supports diagnosis of the disease.



### SUPER CCD TECHNOLOGY

The Super CCD and high-performance optical system provides high-quality images.



### HD TECHNOLOGY

Combine equipment displaying this logo to ensure that you view HDTV images on your monitor.

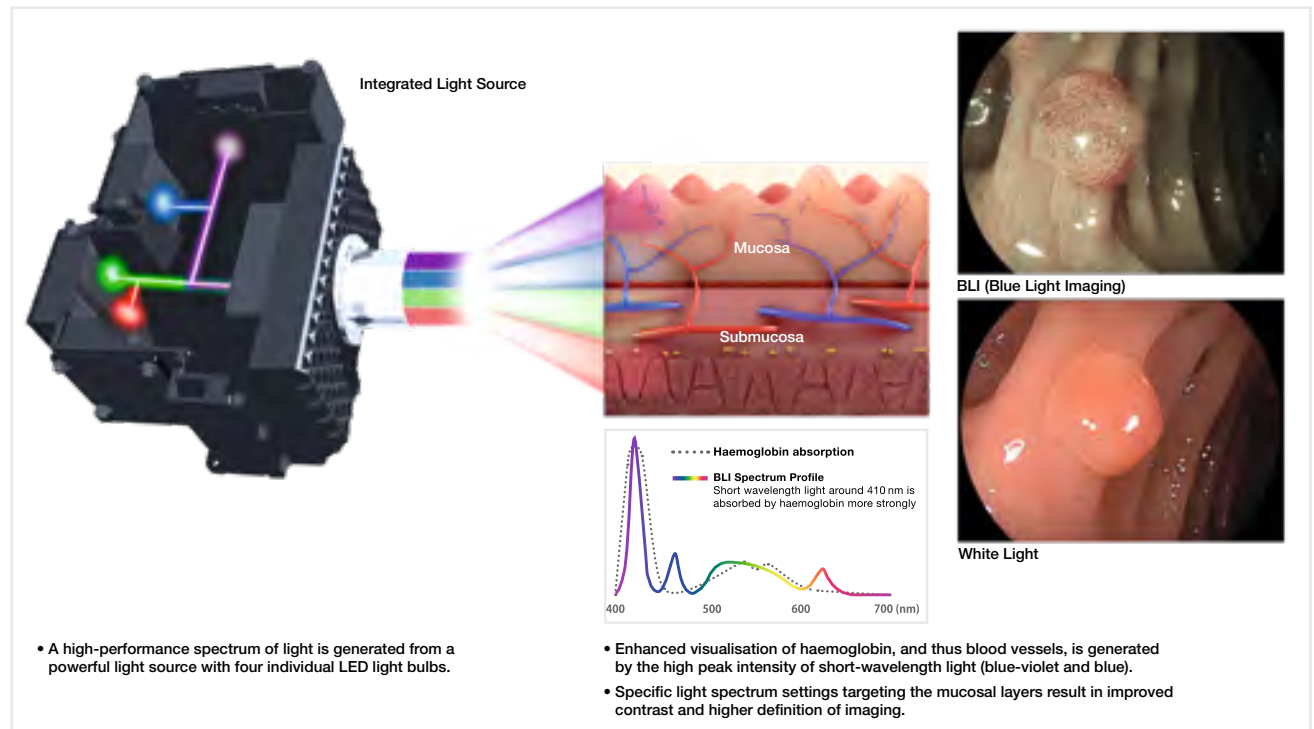


## SEE MORE. DETECT MORE. MULTI LIGHT™ TECHNOLOGY.



Achieving improved diagnostic and therapeutic results in endoscopic procedures is highly dependent on image quality. As one of the world's largest imaging companies, our long-standing experience in medical imaging has allowed Fujifilm's engineers to develop Multi Light™ technology, fulfilling the need for improved visualisation in endoscopy – today and in the future. This illumination system meets the high brightness and contrast standards enabling the observation modes LCI and BLI. Specifically designed for this illumination system, the ELUXEO™ 700 series of endoscopes provides detailed high-resolution imaging for both diagnosis and pre-therapeutic assessment.

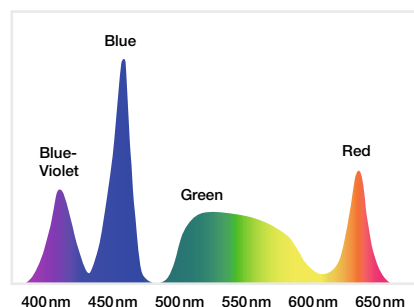
### IMPROVED ILLUMINATION USING VARIABLE LED LIGHT INTENSITY



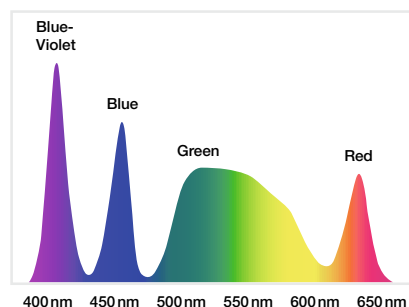
This drawing is for illustration purposes only and not a complete representation.

High-intensity illumination based on Multi Light™ technology creates high-quality images with White Light Imaging and the observation modes LCI and BLI. With the involvement of numerous clinical experts, the ideal composition of four LEDs for each observation mode has been developed to achieve excellent results in illumination. With a simple push of a button, you can easily switch between the following observation modes:

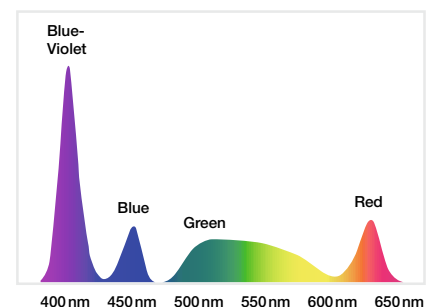
#### WHITE LIGHT IMAGING



#### LCI MODE



#### BLI MODE

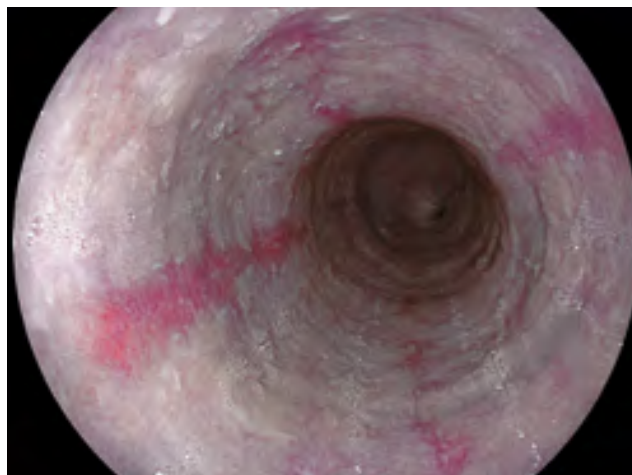


## LCI (LINKED COLOR IMAGING) MODE

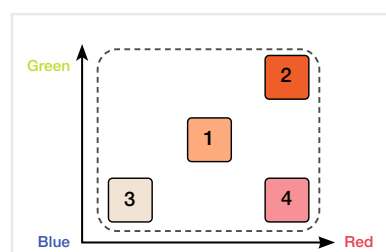
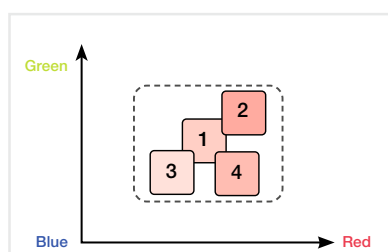
LCI differentiates the red colour spectrum more effectively than White Light Imaging thanks to its preprocess composition of light spectrum and advanced signal processing. The increased colour contrast in red colour leads to improved visibility of abnormalities, inflammation and delineation.



Oesophagus – White Light Imaging



Oesophagus – LCI Mode



## BLI (BLUE LIGHT IMAGING) MODE

High-intensity contrast imaging with BLI is expected to be helpful for improved visualisation of superficial vascular and mucosal patterns. Focussing on the characteristics of short wavelength absorption of haemoglobin (at 410nm) combined with specific white light spectral colours results in improved contrast imaging.



Colon – White Light Imaging



Colon – BLI Mode



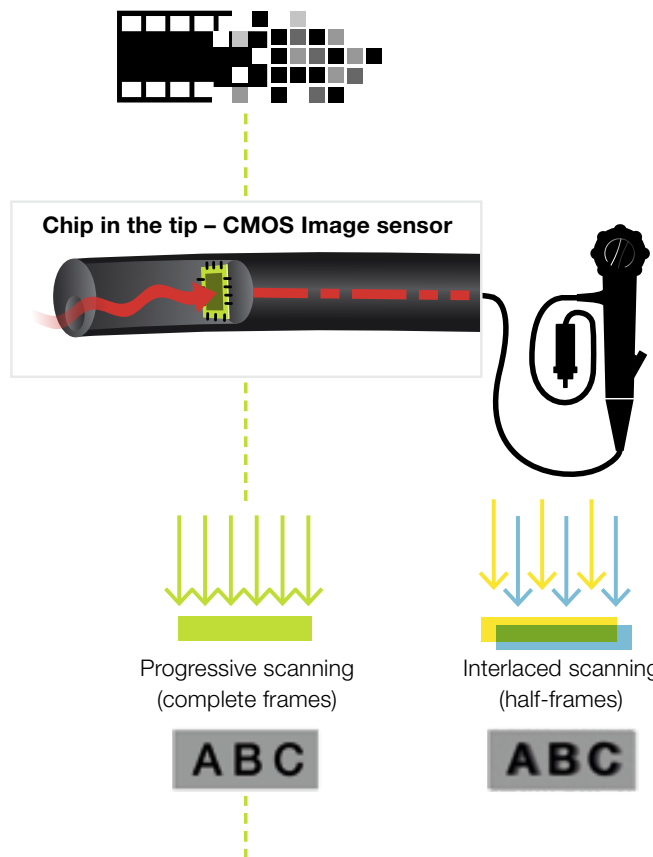


## CMOS TECHNOLOGY WITH MEGAPIXEL



With the CMOS chip built directly into the tip of the endoscope, the signal is digitally transmitted through the device, thus providing high-resolution imaging. All 760, 720 and 600 endoscopes are equipped with CMOS.

Analogue transmission | Digital transmission



**The CMOS chip** is positioned directly in the tip of the endoscope and transforms the analogue signal into a digital signal at the site of examination. This ensures **brilliant image transmission with reduced noise**.

**CMOS technology** supports 60 frame progressive scanning technology where complete images are processed, rather than half-frames processed when using the interlaced scanning method. The result is a high-resolution image and smooth moving images with reduced blurring.



Colon in super high resolution



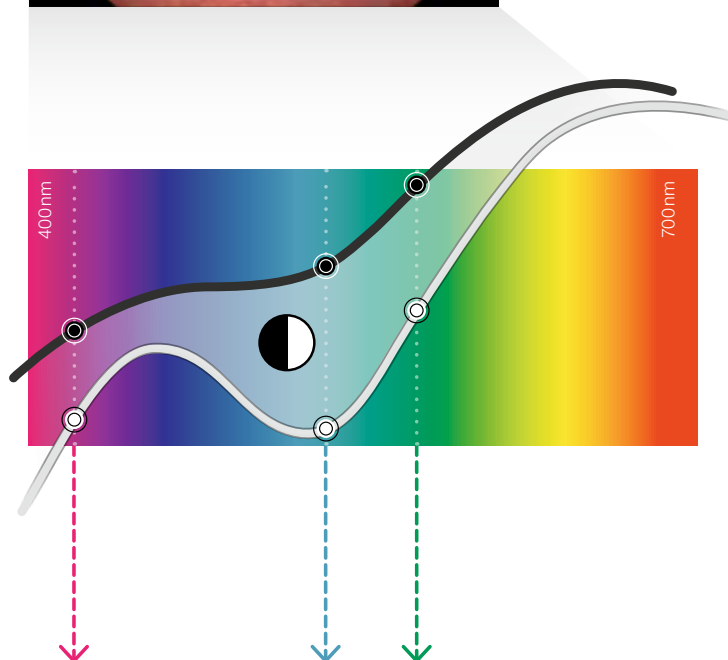
### Better visibility for detection and diagnosis

FICE – Flexible Spectral Imaging Colour Enhancement – enhances colour differences such as vascular and mucosal patterns without the need for tissue staining. The procedure digitally selects three wavelengths of the light and displays the reconstructed images. The endoscope switch allows physicians to change between the conventional image and the FICE image in a split second, ensuring an uninterrupted examination with the eyes always concentrated on the monitor.



#### XENON endoscopy White Light image

Nearly all of the red wavelength is reflected.



#### FICE (Flexible Spectral Imaging Colour Enhancement)

The contrast is enhanced and the vascular pattern is highlighted by focusing on the difference in wavelength reflection of mucosa and blood vessels.

#### DUAL MODE

##### Simultaneously displays a FICE image and a White Light image on the same monitor

A dual view of a FICE image and a White Light image on the same monitor allows you to collect more information for examination and diagnosis.





## MULTI ZOOM



**Optical zoom for precise focusing:** Fujifilm's latest Multi Zoom technology enables programming of up to three magnification modes to realise an easy-to-control endoscopic zoom (stepwise or continuous magnification mode).

- **2-step zoom**
- **3-step zoom**
- **5-step zoom**

The optical zoom allows a close examination of the mucosa tissue and capillary structures in combination with excellent focusing and orientation during magnification throughout the wide focal plane.

Mode	Magnification setting				
	Normal	Low (about x60)	Middle (about x85)	High (about x100)	Maximum (x145)*
2-step zoom	●	●			
3-step zoom	●	●	●		
5-step zoom	●	●	●	●	●
Continuous zoom	■				

## E-ZOOM

### Electronic zoom provides better visibility

E-Zoom images can be provided by pressing the endoscope button once. Normally, E-Zoom increases the noise in an image. The E-Zoom function can be used with the 600 series to produce a FICE image with less noise so that it is possible to observe the surface pattern detail as well as the vascular pattern.

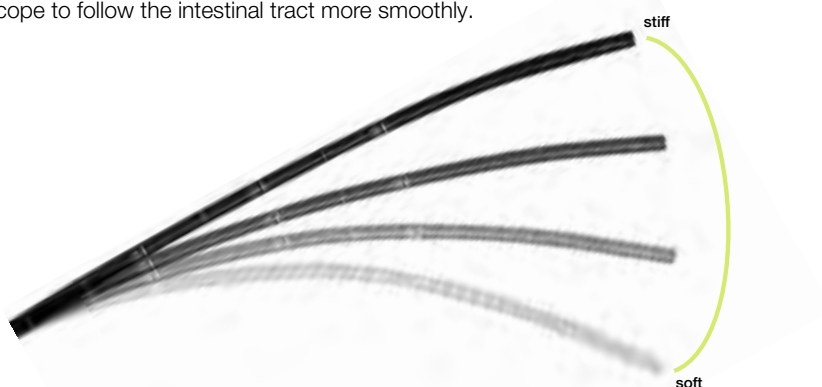
\* In combination with 26" screen.

## COLOASSIST ADJUST

**ColoAssist Adjust has been specifically developed for the 760 series colonoscopes.** It features the Flexibility Adjuster with different levels of stiffness as well as Advanced Force Transmission and Adaptive Bending, expected to be helpful for manoeuvrability.

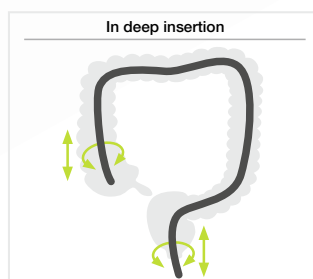
## FLEXIBILITY ADJUSTER

The stiffness of the flexible portion of the colonoscope can be easily adjusted according to your preference by turning the flexibility adjustment ring (level 0 to 3). This is expected to be helpful during intubation when passing segments such as the sigmoid colon and the transverse colon, leading the endoscope to follow the intestinal tract more smoothly.



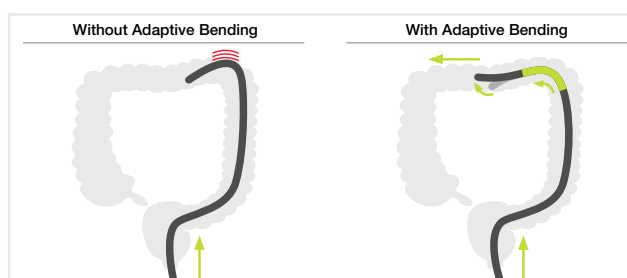
## ADVANCED FORCE TRANSMISSION

The flexible portion is designed to transmit the pushing, pulling and rotating movements from the hand to the distal end of the endoscope. It is intended to be helpful for manoeuvrability inside the digestive tract.



## ADAPTIVE BENDING

The end of the bending section is soft, allowing the endoscope to bend easily. The flexible bending section has been designed to return more easily to its straight form after passing through the tight curves of the colon.





## OVER MEGAPIXEL CMOS IMAGE SENSOR



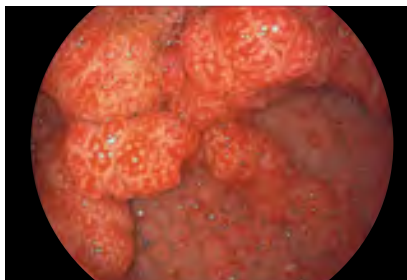
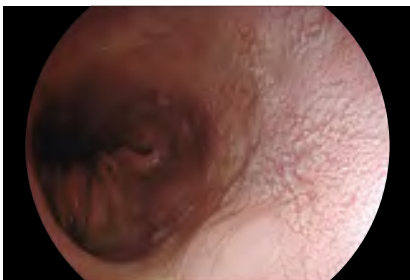
With Over Megapixel CMOS image sensor, 760, 720 and 600 series endoscopes produce high-resolution images, while the CMOS technology realises less noise and brilliant images. The CMOS image sensor can change the analogue signal to digital in the tip of the endoscope. This short transmission path reduces quality losses.



## CLOSE FOCUS ENHANCES IMAGING FOR DIAGNOSIS



The high-performance optical system enhances Close Focus observation capability up to 2 mm. The focus at the edges of an image has been improved. The combination of the Megapixel CMOS image sensor and the high-performance optical system assists various observations ranging from close-up to distant views.

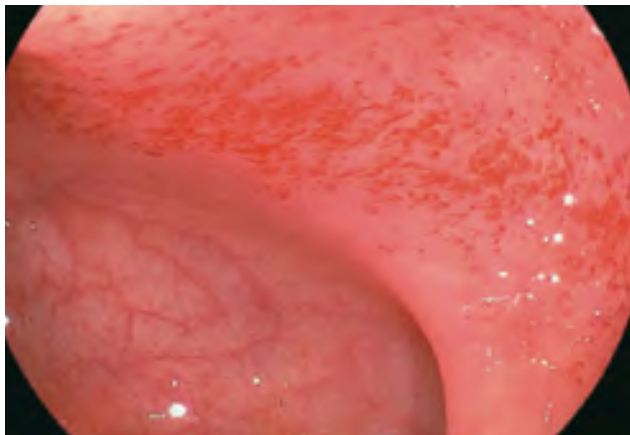


## ANTI-BLUR FUNCTION

This function extracts the best still image from multiple images to offer a sharp and clear image every time.



Freezing the image during the examination: High quality image sequences are stored in temporary memory and can be accessed later



Automatic selection and display of a sharp image

## AUTO PHOTOMETRIC CONTROL

The automatic light control setting of the IRIS mode adjusts the lighting in accordance with the positioning of the endoscope, providing you with a well-balanced picture. You always get excellent illuminated images\* whether focusing close-up or from a distance.



Distant focus



Close Focus

\* Available with the 700, 600 and 500 series endoscopes.





# EXPERIENCING ENDOSCOPY **FROM SCREENING TO TREATMENT**



## **RELIABLE GUIDANCE, IMPROVED OUTCOMES**

As one of the leading companies in the development of endoscope technology, Fujifilm is always striving to provide high quality products, excellent services and highly customised business solutions in the world of endoscopy.

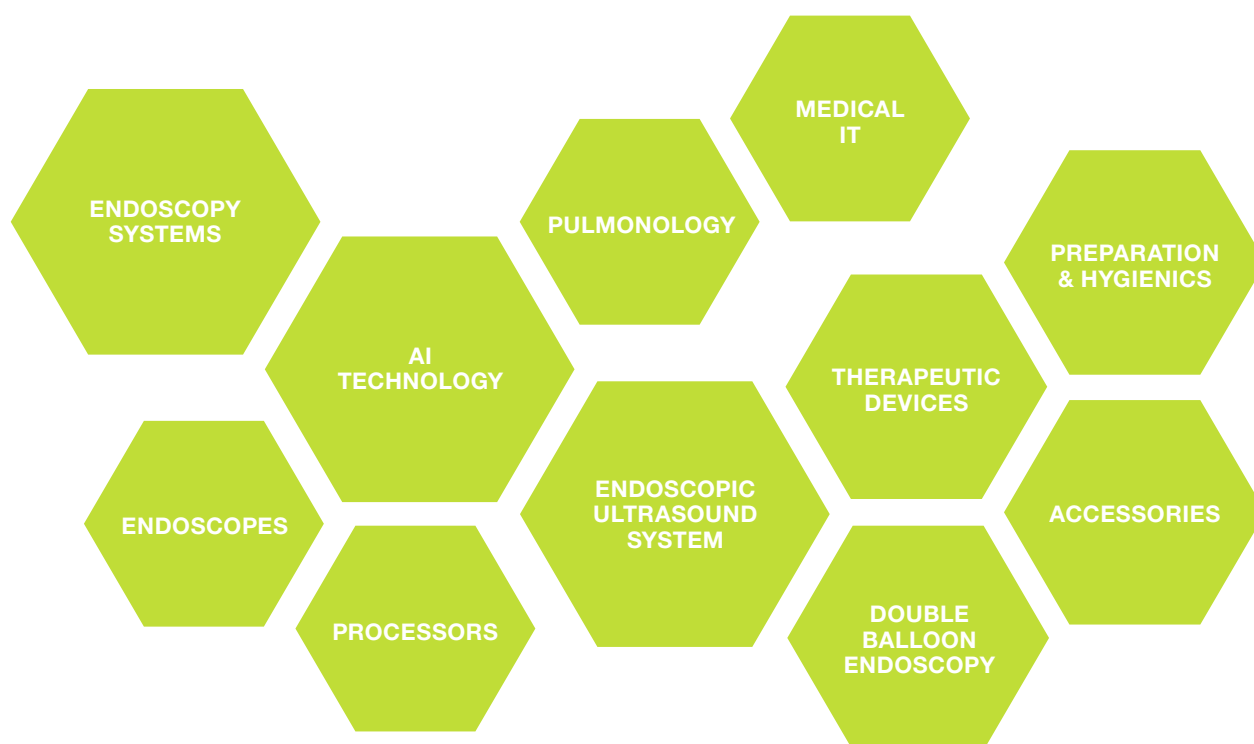
We regularly set new benchmarks, for example, with the introduction of the LED Multi Light™ technology providing the observation modes LCI and BLI, with devices for double balloon endoscopy as well as the effective Flamingo device to meet the therapeutic challenges of the buried bumper-syndrome.

## PRODUCT PORTFOLIO

**For diagnostic and interventional endoscopy  
Fujifilm is pushing the boundaries of endoscopic  
imaging technologies, AI empowered.**

We have built an integrated portfolio of solutions which is able to support the healthcare system to focus on the patient's needs.

Fujifilm offers a wide range of endoscopic and therapeutic technologies from endoscopy systems to devices and services, providing endoscopic solutions from screening to treatment.





# ELUXEO™ 700 SERIES ENDOSCOPES



## ENHANCED VISUALISATION AND ILLUMINATION

The ELUXEO™ 700 series is compatible with special light observation modes such as Linked Color Imaging (LCI) and Blue Light Imaging (BLI), expanding Fujifilm's offerings in image enhanced endoscopy to support diagnosis, characterisation and treatment.



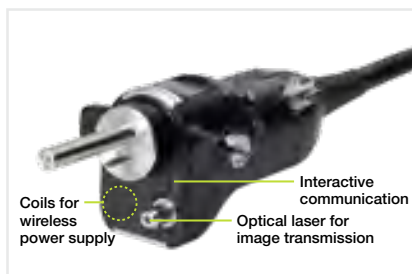
**JAZZ valves:\***  
protection against  
infection and cross  
contamination.



## ONE-STEP CONNECTOR FOR EASY PLUG-IN



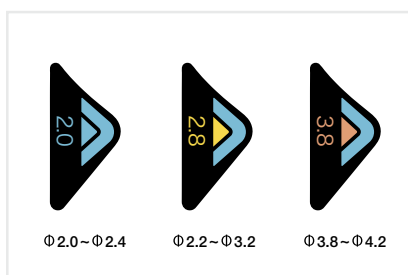
The 700 series endoscopes can easily be plugged in by its One-Step Connector. This is the first connector to incorporate an integrated wireless power supply that provides high-speed transmission of data. The design helps to simplify the cleaning process and reduces the potential for accidental damage.



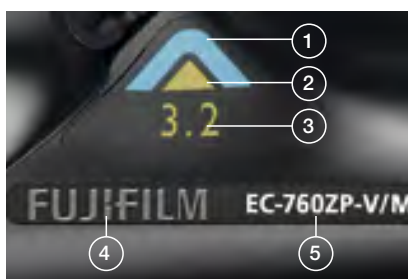
## G7 GRIP FOR COMFORT IN DAILY PRACTICE



In close cooperation with leading endoscopists, Fujifilm has renewed the layout and size of the components of the control portion and repositioned the angulation knobs to increase accessibility from the grip. The G7 grip is designed to have an easy and comfortable feel that improves performance and reduces stress during clinical procedures.



Each 700 series endoscope displays the information required to choose compatible accessories, which helps to facilitate on-the-spot decision making.



- 1 Colour code of G7 control portion
- 2 Identification colour of working channel size
- 3 Working channel diameter
- 4 Corporate brand logo
- 5 Model number



## UPPER GI ENDOSCOPY

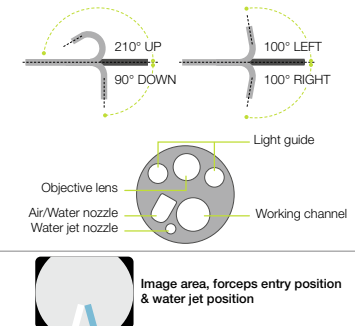
### EG-760R **ELUXEO™** VIDEO GASTROSCOPE Routine Type



This routine gastroscope from the ELUXEO™ 760 series is equipped with CMOS technology and provides HD images and videos for daily practice. Close Focus allows observation from as little as 2 mm in depth.



Field of view	140°
Observation range	2–100 mm
Bending capability	Up 210°/Down 90° Right 100°/Left 100°
Ø Distal end	9.2 mm
Ø Flexible portion	9.3 mm
Ø Working channel	2.8 mm
Working length	1,100 mm
Total length	1,400 mm



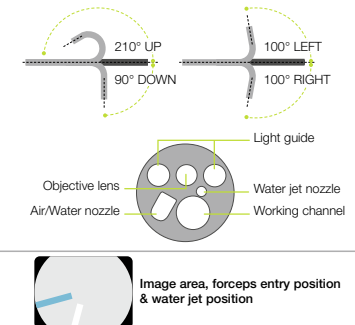
### EG-760Z **ELUXEO™** VIDEO GASTROSCOPE Optical Magnification



This zoom gastroscope features the well-known 145x Multi Zoom\* which leads to clear and more detailed visualisation, supporting deeper analysis of mucosal structures. It has a small bending radius and similar functionality to the routine gastroscope including all features.

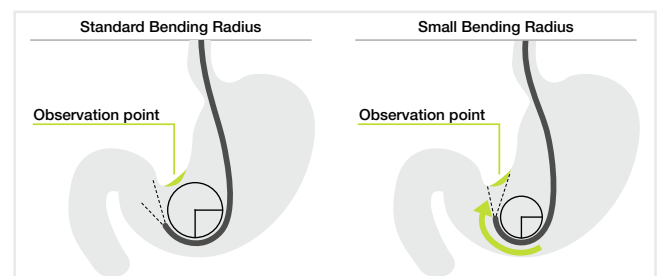


Field of view	Normal 140°/Close 56°
Observation range	1.5–100 mm Normal 3–100 mm Close 1.5–2.5 mm
Bending capability	Up 210°/Down 90° Right 100°/Left 100°
Ø Distal end	9.9 mm
Ø Flexible portion	9.8 mm
Ø Working channel	2.8 mm
Working length	1,100 mm
Total length	1,400 mm



#### Small Bending Radius

Features a tight bending section radius with improved angulation. It is designed to approach the targeted observation point and lesion more easily and with less effort.





## UPPER GI ENDOSCOPY

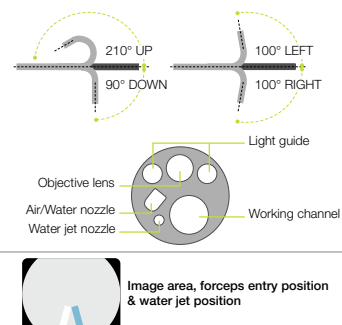
### EG-760CT ELUXEO™ VIDEO GASTROSCOPE Therapeutic Type



This gastroscope from the ELUXEO™ 760 series is equipped with a large 3.8 mm working channel that is especially suitable for therapeutic procedures compared to the standard gastroscope EG-760R with a working channel of 2.8 mm. In addition to therapeutic use, the gastroscope features LCI, intended to improve detection, and BLI, intended to characterise lesions, making it an excellent gastroscope for observation.

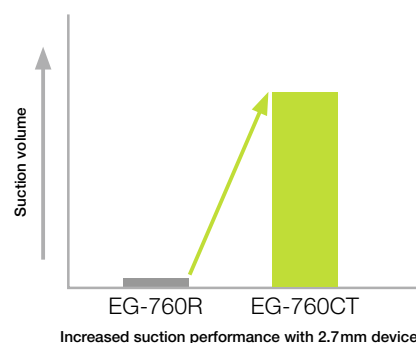
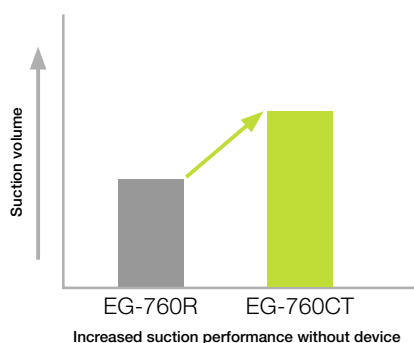


Field of view	140°
Observation range	2–100 mm
Bending capability	Up 210°/Down 90° Right 100°/Left 100°
Ø Distal end	10.5 mm
Ø Flexible portion	10.8 mm
Ø Working channel	3.8 mm
Working length	1,100 mm
Total length	1,400 mm



#### Enlarged working channel for improved suction performance

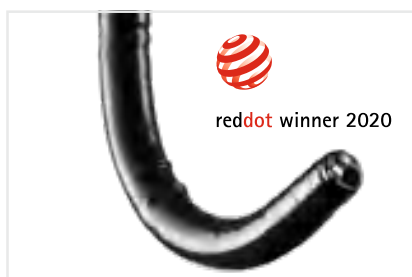
The 3.8 mm working channel has a higher suction capacity compared to other gastroscopes, especially when the therapeutic accessory is inserted into the working channel.



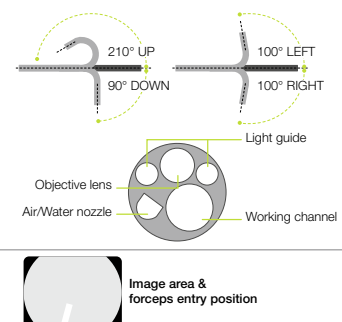
### EG-740N ELUXEO™ VIDEO GASTROSCOPE Ultra Slim Type



This ultra slim gastroscope with a distal end diameter of 5.8 mm is expected to be useful for narrow GI anatomy and for cases featuring stenosis. The slim distal end also supports a soft transnasal insertion and offers the potential to alleviate patients' discomfort.



Field of view	140°
Observation range	3–100 mm
Bending capability	Up 210°/Down 90° Right 100°/Left 100°
Ø Distal end	5.8 mm
Ø Flexible portion	5.9 mm
Ø Working channel	2.4 mm
Working length	1,100 mm
Total length	1,400 mm





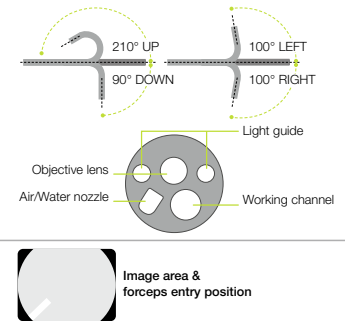


## UPPER GI ENDOSCOPY

### EG-720R **ELUXEO™ Lite** VIDEO GASTROSCOPE Routine Type



Field of view	140°
Observation range	2–100 mm
Bending capability	Up 210°/Down 90° Right 100°/Left 100°
Ø Distal end	9.2 mm
Ø Flexible portion	9.3 mm
Ø Working channel	2.8 mm
Working length	1,100 mm
Total length	1,400 mm



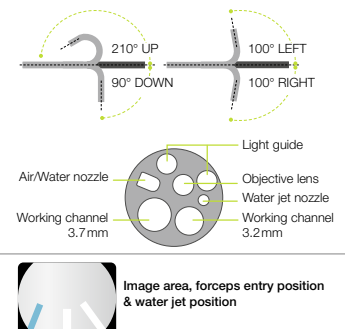
## UPPER & LOWER GI ENDOSCOPY

### **NEW** EI-740D/S **ELUXEO™** VIDEO GASTROSCOPE & SIGMOIDOSCOPE Dual Channel

The ELUXEO EI-740D/S is intended for use in both the upper gastrointestinal tract and sigmoid colon and combines the former EG-530D gastroscope, and ES-530WE sigmoidoscope in one exceptional endoscope. With its two instrument channels (3.7 and 3.2 mm) and improved suction performance, it is especially suitable for various therapeutic procedures.



Field of view	140°
Observation range	3–100 mm
Bending capability	Up 210°/Down 90° Right 100°/Left 100°
Ø Distal end	12.8 mm
Ø Insertion tube	12.8 mm
Ø Working channel	3.7 mm/3.2 mm
Working length	1,030 mm
Total length	1,330 mm



#### Large dual instrument channels

Compared to the 530 series dual instrument channel endoscopes, the EI-740D/S endoscope has an improved instrument channel capacity. The smaller instrument channel is increased from 2.8 to 3.2 mm, therefore providing an 3.2 and 3.7 mm dual instrument channel configuration. By accommodating two endotherapeutic devices simultaneously, the endoscope allows for a broader range of therapeutic possibilities.

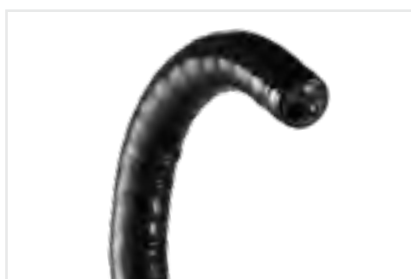


## LOWER GI ENDOSCOPY

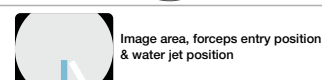
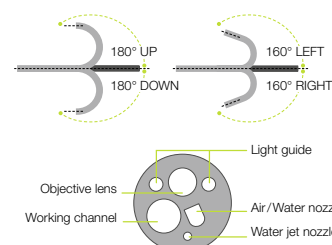
### EC-760R-V/M, I, L ELUXEO™ VIDEO COLONOSCOPE Routine Type



This routine colonoscope has a wide field of view of 170° as well as a large working channel diameter of 3.8 mm. It features the G7 grip and the Flexibility Adjuster. In addition, it has a slim diameter of 12.0 mm and includes a water jet function and CMOS technology.

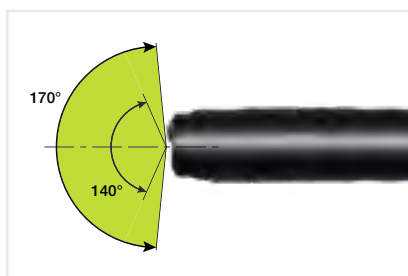


Field of view	170°
Observation range	2–100 mm
Bending capability	Up 180°/Down 180° Right 160°/Left 160°
Ø Distal end	12.0 mm
Ø Flexible portion	12.0 mm
Ø Working channel	3.8 mm
Working length	1,330/1,520/1,690 mm
Total length	1,650/1,840/2,010 mm



#### Wide 170° field of view

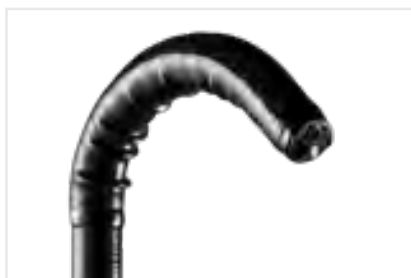
With EC-760R and EC-760P, a wide 170° field of view is available. It is designed to observe and approach smoothly, even areas that are hard to observe, such as the reverse side of folds.



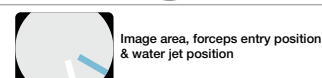
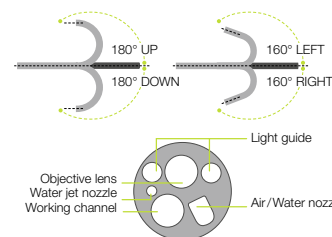
### EC-760Z-V/M, L ELUXEO™ VIDEO COLONOSCOPE Optical Magnification



The zoom colonoscope is an all-rounder. It features the brilliant and easy-to-operate 145x Multi Zoom\* magnification which leads to more detailed visualisation, supporting a deeper analysis of mucosal and vascular patterns. Compared to the EC-760ZP ultra slim zoom type, it comes with a stiffer insertion tube and a larger working channel (3.8 mm vs. 3.2 mm), meaning it is also well-suited for basic therapeutic procedures.



Field of view	Normal 140°/Close 56°
Observation range	1.5–100 mm Normal 3–100 mm Close 1.5–2.5 mm
Bending capability	Up 180°/Down 180° Right 160°/Left 160°
Ø Distal end	12.8 mm
Ø Insertion tube	12.8 mm
Ø Working channel	3.8 mm
Working length	1,330 mm/1,690 mm
Total length	1,650 mm/2,010 mm



The CAD EYE AI technology is available for all colonoscopes.

\* In combination with 26" screen.

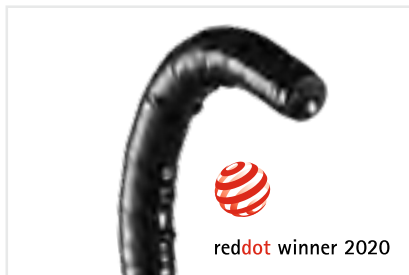


## LOWER GI ENDOSCOPY

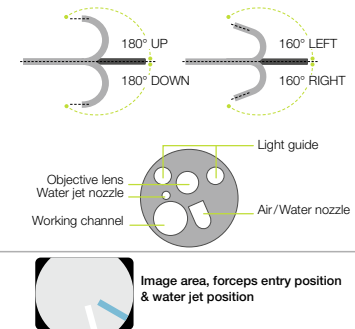
### EC-760ZP-V/M, L ELUXEO™ VIDEO COLONOSCOPE Optical Magnification



The slim zoom colonoscope features the brilliant and easy-to-operate Multi Zoom with 145x maximum magnification\*. Together with BLI, details of the mucosal and vascular patterns become visible. Like the routine endoscope, it features the full range of functionalities including flexible adjustment even with the slim diameter of 11.8mm.



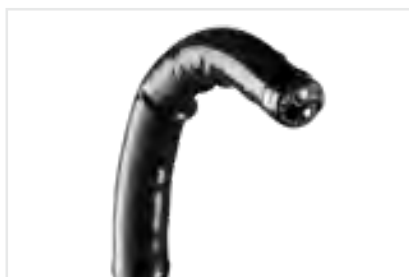
<b>Field of view</b>	Normal 140° / Close 56°
<b>Observation range</b>	1.5–100mm Normal 3–100mm Close 1.5–2.5mm
<b>Bending capability</b>	Up 180°/Down 180° Right 160°/Left 160°
<b>Ø Distal end</b>	11.7 mm
<b>Ø Flexible portion</b>	11.8mm
<b>Ø Working channel</b>	3.2mm
<b>Working length</b>	1,330/1,690mm
<b>Total length</b>	1,650/2,010mm



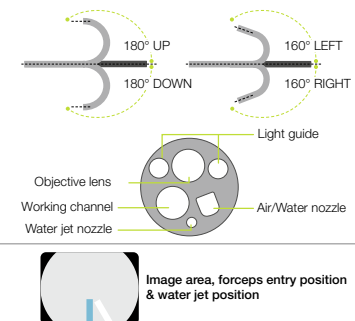
### EC-760P-V/M, L ELUXEO™ VIDEO COLONOSCOPE Ultra Slim Type



This ultra slim colonoscope from the ELUXEO™ 760 series has a distal end diameter of only 11.1 mm and is therefore expected to be useful for narrow GI anatomy, cases featuring stenosis and therapeutic use. A wide 170° field of view enables a visualisation even in hard-to-observe areas. It features the G7 grip and the Flexibility Adjuster for easier insertion.



<b>Field of view</b>	170°
<b>Observation range</b>	2–100mm
<b>Bending capability</b>	Up 180°/Down 180° Right 160°/Left 160°
<b>Ø Distal end</b>	11.1 mm
<b>Ø Flexible portion</b>	11.5mm
<b>Ø Working channel</b>	3.2mm
<b>Working length</b>	1,330/1,690mm
<b>Total length</b>	1,650/2,010mm



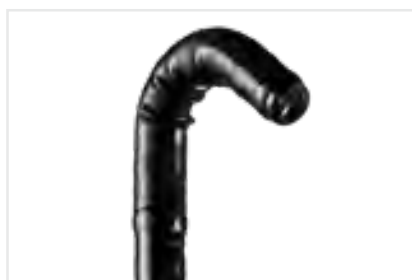
\* In combination with 26" screen  
The CAD EYE AI technology is available for all colonoscopes.

## LOWER GI ENDOSCOPY

### EC-740T/M, L ELUXEO™ VIDEO COLONOSCOPE Slim & Treatment Type



This slim colonoscope is equipped with Advanced Force Transmission, 210° up-angulation and a G7 grip that supports excellent manoeuvrability. It is expected to be useful for more challenging anatomies and narrow GI anatomy, such as stenosis, severe inflammation, or anatomical adhesion. With the additional observation modes LCI, intended to improve detection, and BLI, intended to characterise lesions, this is an excellent colonoscope for both observation and therapeutic procedures.



Field of view	140°
Observation range	3–100 mm
Bending capability	Up 210°/Down 160° Right 160°/Left 160°
Ø Distal end	9.8 mm
Ø Flexible portion	10.7 mm
Ø Working channel	3.2 mm
Working length	1,330/1,690 mm
Total length	1,630/1,990 mm

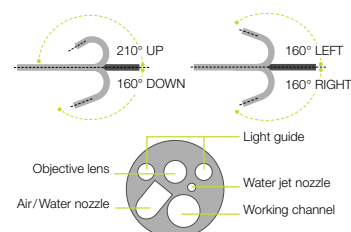


Image area, forceps entry position & water jet position

#### SMART BEND



**Smart Bend provides excellent manoeuvrability, observation and therapeutic treatments from 210° up-angulation and a small bending radius.** It is expected to be useful for treatment of difficult-to-reach lesions.

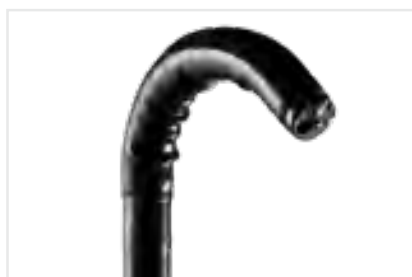


Smart Bend colonoscope: Up to 210°



Colonoscope without Smart Bend

### EC-720R/M, I, L ELUXEO™ Lite VIDEO COLONOSCOPE Routine Type



Field of view	170°
Observation range	2–100 mm
Bending capability	Up 180°/Down 180° Right 160°/Left 160°
Ø Distal end	12.8 mm
Ø Flexible portion	12.8 mm
Ø Working channel	3.8 mm
Working length	1,330/1,520/1,690 mm
Total length	1,630/1,820/1,990 mm

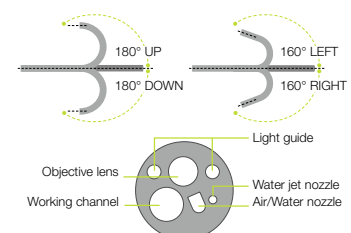


Image area, forceps entry position & water jet position



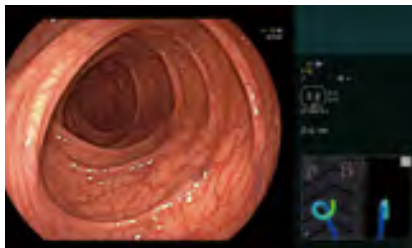
# COLOASSIST PRO: ENDOSCOPE VISUALISATION SYSTEM



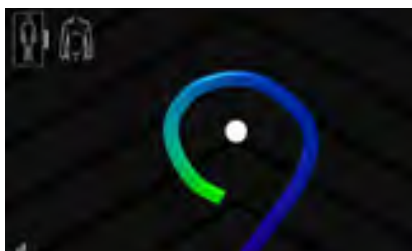
## REAL-TIME VISUALISATION

Fujifilm's Endoscope Visualisation System displays the configuration of the endoscope in real-time by reproducing a coloured graphical representation of the endoscope next to endoscopic view.

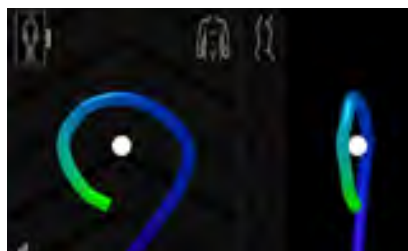
The three display modes support physicians in understanding the behaviour of colonoscopes during the intubation, to enable the identification of loop formation and to reduce patient burden during an endoscopy.



The endoscope shape is to be displayed on the monitor for VP-7000 by using the PoP function



Single Screen Mode: Displays the endoscope model from one direction (out of 4)



Dual Screen Mode: Displays the endoscope model from two directions

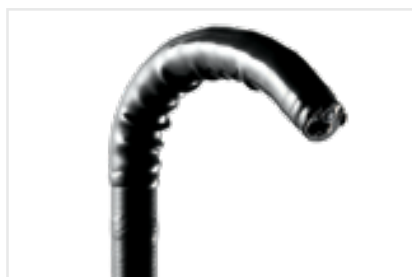


Sky View Mode: Displays the endoscope model obliquely from above the foot section of the patient

## EC-760S-G/L, M ELUXEO™ COLONOSCOPE Routine Type



This routine colonoscope with visualisation function from the ELUXEO™ 760 series is equipped with CMOS technology and provides HD images and videos for daily practice. Close Focus allows observation from a distance as close as 2 mm.



A unique symbol for the endoscope with "Visualizer"

Field of view	170°
Observation range	2–100 mm
Bending capability	Up 180°/Down 180° Right 160°/Left 160°
Ø Distal end	12.8 mm
Ø Flexible portion	12.8 mm
Ø Working channel	3.8 mm
Working length	1,330/1,690 mm
Total length	1,650/2,010 mm
Endoscope Visualizer	Compatible

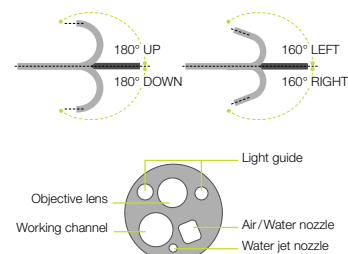


Image area, forceps entry position & water jet position

## EV-3D ENDOSCOPE VISUALIZER



Power	100–240V ~ 50/60 Hz
Current consumption	1.0–0.7 A
Video Output	DVI-I (1280x1024px/ 1920 x1080px) HD-SDI (1920x1080px)
Supported endoscopes	EC-760S-G/L, M
Dimensions (W x H x D)	380 x 80 x 445 mm (including projection)
Weight	6.5 kg
Frequency band	200–2000 Hz

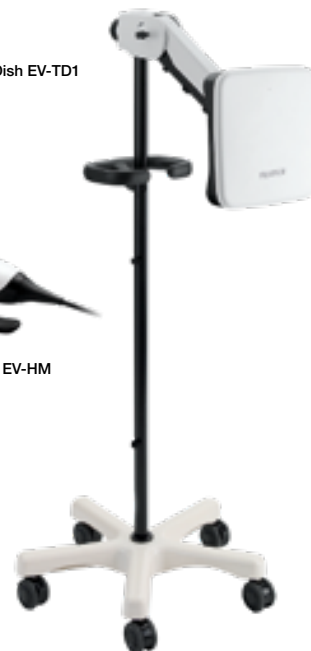
The system requires the Endoscope Visualizer EV-3D with peripherals (handmarker, transceiver dish) as well as the dedicated colonoscope (EC-760S-G/L,M). It is compatible with CAD EYE AI technology.



Transceiver Dish EV-TD1



Hand Marker EV-HM







## ELUXEO™ FEATURING G-EYE



### INCREASED ADR\*

The G-EYE® 760R endoscope is equipped with a permanently integrated balloon at the bending section of the routine colonoscope. On demand, the reusable balloon can be inflated, thereby flattening the colonic walls and improving the detection of hidden polyps\*. It is also compatible with CAD EYE AI technology.

### STRAIGHTENING COLONIC FOLDS

### CONTROLLED WITHDRAWAL™ CENTRALISING ENDOSCOPE OPTICS, REDUCING BOWEL SLIPPAGE

### ENDOSCOPE STABILISATION DURING INTERVENTIONAL SESSIONS



\* "G-EYE colonoscopy is superior to standard colonoscopy for increasing adenoma detection rate: an international randomized controlled trial", Shirin H. et al., Gastrointestinal Endoscopy 2019; 89(3): 545-553  
Halpern, Z. et al. Comparison of adenoma detection and miss rates between a novel balloon colonoscopy and standard colonoscopy: a randomized tandem study (Endoscopy 2015; 47(03): 238-244 DOI: 10.1055/s-0034-1391437)

**Assisting visualisation, stabilisation and control during colonoscopy:** Besides detection enhancement, physicians could benefit from the G-EYE® system throughout the whole procedure, from assistance in delooping during intubation, via Controlled Withdrawal™ that reduces bowel slippage, through to supporting therapeutic interventions e.g. EMR/ESDs by stabilising and anchoring the endoscope tip.

#### INTUBATION



**G-EYE®** could be used for delooping with anchoring function

#### DETECTION



**G-EYE®** flattens topography to detect hidden polyps

Controlled Withdrawal™ with partially inflated balloon



#### CHARACTERISATION



**G-EYE®** stabilises the endoscope during characterisation

Controlled Withdrawal™ with partially inflated balloon



#### TREATMENT

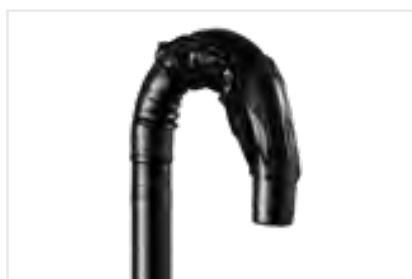


**G-EYE®** stabilises the endoscope during treatment

### G-EYE® 760R



The G-EYE® endoscope is based on the ELUXEO™ EC-760R routine colonoscope, comes in three different lengths and features the same technical specifications including LCI and BLI imaging modes. To operate, the Spark<sup>2</sup>C Inflation System is needed.



Field of view	170°
Observation range	2–100 mm
Bending capability (when deflated)	Up 180°/Down 180° Right 160°/Left 160°
Ø Distal end	12.0 mm
Ø Insertion tube	12.0 mm
Ø Working channel	3.8 mm
Working length	1,330/1,520/1,690 mm
Total length	1,650/1,840/2,010 mm
Balloon diameter	Up to 55 mm

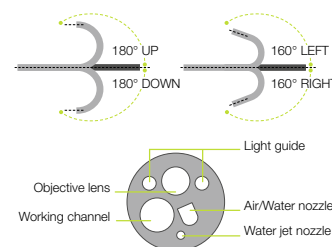


Image area, forceps entry position & water jet position



SPARK<sup>2</sup>C Inflation System



# CAD EYE: *ELUXEO*™ MEETS ARTIFICIAL INTELLIGENCE



## INTELLIGENT SUPPORT

CAD EYE works with the expansion unit EX-1 and the CAD EYE software EW10-EC02. The documentation software EW10-SC01 enables still image and movie recording (up to 30 hours) in the EX-1 memory and features data transfer via the network. It can easily be controlled with the endoscope switch or directly at the processor.



**FOR COLONIC POLYP DETECTION  
& CHARACTERISATION**

**MOVIE/STILL IMAGE RECORDING  
& NETWORK FUNCTION**

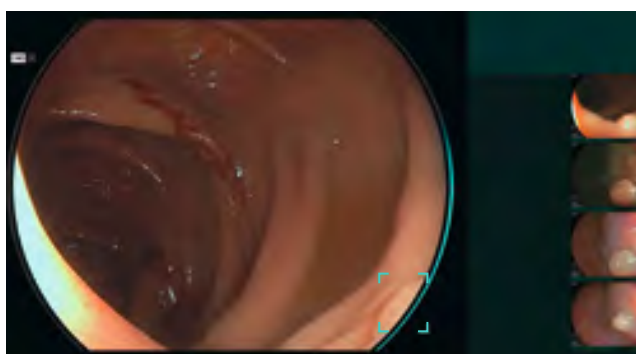
**FUTURE CAD APPLICATIONS  
CAN BE INSTALLED**

**COMPATIBLE WITH ALL ELUXEO™  
700 SERIES COLONOSCOPES,  
G-EYE 760R & COLOASSIST PRO**

The novel function CAD EYE has been developed utilising AI deep learning technology and is compatible with Fujifilm's ELUXEO™ endoscopy series to support endoscopic lesion detection and characterisation in the colon.

## REAL-TIME DETECTION

CAD EYE is aimed at improving the real-time polyp detection rate to expert level, helping recognise flat lesions, multiple polyps simultaneously as well as any lesions at the corner of the image. CAD EYE Detection is possible with White Light and LCI (Linked Color Imaging) mode.



White Light Mode



LCI Mode

## CHARACTERISATION SUPPORT

Once a suspected polyp is detected by CAD EYE Detection (WLI or LCI), CAD EYE Characterisation – in combination with BLI – can support endoscopists in the predictive histopathological diagnosis of the polyp. This function analyses in real-time and without freezing or zooming if a polyp is hyperplastic or neoplastic, which is visually indicated by the use of different colour codes in the Position Map. CAD EYE Characterisation is intended to make procedures more efficient by increasing the accuracy of diagnosis to an experts' level.\*



BLI Mode – Neoplastic



BLI Mode – Hyperplastic

POWERED BY  
**REiLI** 

\* According to the validation study, the accuracy of non-experts with the assistance of CAD EYE Characterisation was equivalent to that of an expert.





## 600 SERIES ENDOSCOPES



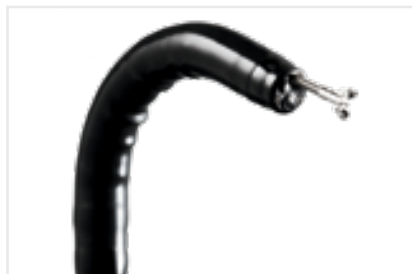
### EXCELLENT IMAGE QUALITY

600 series endoscopes with G5 grip are equipped with a CMOS chip in the tip and provide clear and bright endoscopic images.

**Protect your distal end**  
during transport or storage  
with the Shepherd  
Endoscope Protector.\*



## EG-600WR VIDEO GASTROSCOPE Routine Type



Field of view	140°
Observation range	2–100mm
Bending capability	Up 210°/Down 90° Right 100°/Left 100°
Ø Distal end	9.2mm
Ø Flexible portion	9.3mm
Ø Working channel	2.8mm
Working length	1,100mm
Total length	1,400mm

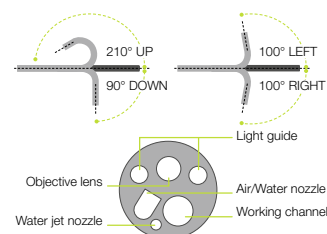


Image area, forceps entry position  
& water jet position

## EC-600WM/WI/WL VIDEO COLONOSCOPE Routine Type



Field of view	140°
Observation range	2–100mm
Bending capability	Up 180°/Down 180° Right 160°/Left 160°
Ø Distal end	12.0mm
Ø Flexible portion	12.0mm
Ø Working channel	3.8mm
Working length	1,330/1,520/1,690mm
Total length	1,630/1,820/1,990mm

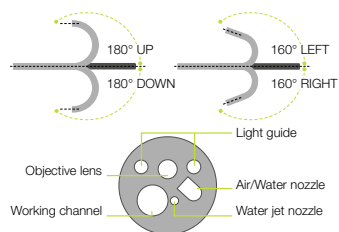


Image area, forceps entry position  
& water jet position

## TISSUE MANAGEMENT\*

**CROSSSNARE ZERO** POLYPECTOMY SNARES for Cold Snaring

**MANTA** INJECTION NEEDLES

**RESECTION MASTER** POLYPECTOMY SNARES for EMR

**OCTOPUS** FOREIGN BODY RETRIEVAL NET

**KOALA** POLYPTRAP



For further information please scan the QR code.

\* Manufactured by FUJIFILM medwork GmbH.





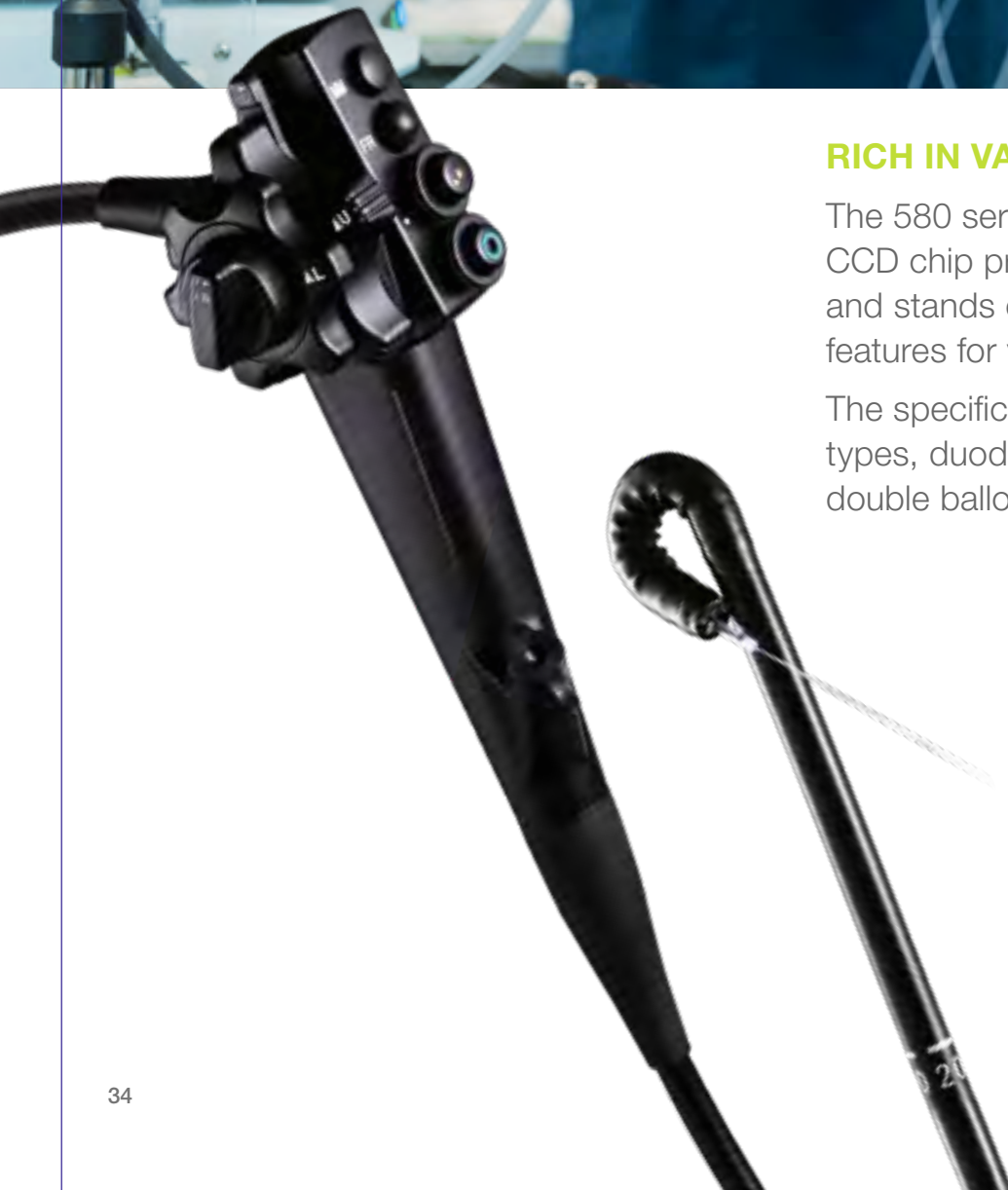
## 580 SERIES ENDOSCOPES



### RICH IN VARIATIONS

The 580 series is equipped with a Super CCD chip providing high-quality images and stands out for its wide range of features for various purposes.

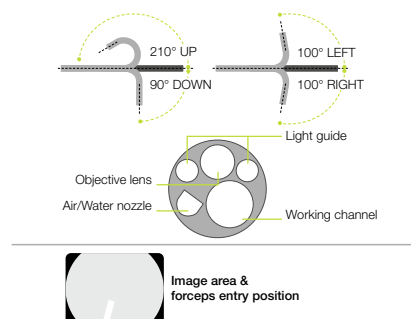
The specifications include ultra slim types, duodenoscopes as well as the double balloon system.



## EG-580NW2 VIDEO GASTROSCOPE Ultra Slim Type

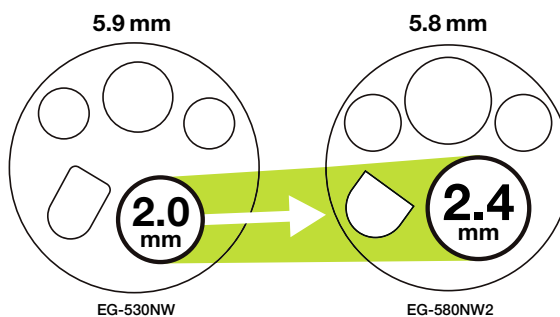


Field of view	140°
Observation range	3–100mm
Bending capability	Up 210°/Down 90° Right 100°/Left 100°
Ø Distal end	5.8mm
Ø Flexible portion	5.9mm
Ø Working channel	2.4mm
Working length	1,100mm
Total length	1,400mm



### Enlarged Working channel for improved suction capacity

The 2.4 mm working channel of the EG-580NW2 realises a higher suction ability compared to the EG-530NW, especially when the therapeutic accessory is inserted into the working channel.





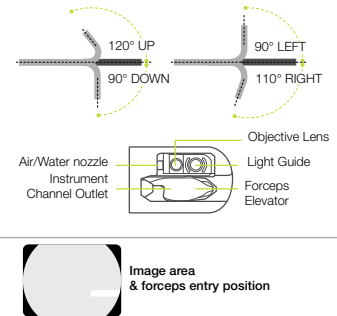
## ED-580XT DUODENOSCOPE



With improved wire locking G-Lock and greater elevation force. The ED-580XT has the G7 control portion which has a rounded surface design to fit in the hand.



Field of view	100° (retro 5°)
Observation range	4–60 mm
Ø Distal end	13.1 mm
Bending capability	Up 120°/Down 90° Left 90°/Right 110°
Working length	1,250 mm
Total length	1,550 mm
Ø Insertion tube	11.3 mm
Minimum Ø of instrument channel	4.2 mm



### Easy and effective distal end cleaning

The single-use distal end cap permits easier brushing access to the distal end of the endoscope. In addition, the elevator mechanism is sealed to allow easier cleaning.



### Improved treatment capability

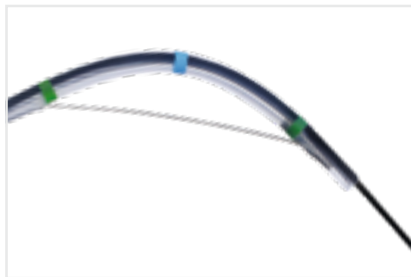
Incorporated into the distal tip of the ED-580XT, the G-Lock contains the forceps elevator and the contact section, enabling the guidewire to be simply and securely fixed into position by using the forceps elevator. In addition, the specially designed rounded forceps elevator reduces the risk of guidewire damage. The inner tube of the instrument channel uses an improved material to enable a device to be inserted smoothly, supporting rapid device exchange. Designed to work in harmony with the endoscopist, the new G-Lock and low friction instrument channel support efficiency and ease of use during ERCP procedures.

## ERCP SOLUTIONS\*

The Fujifilm ERCP range offers solutions from cannulation over stone management up to drainage management.

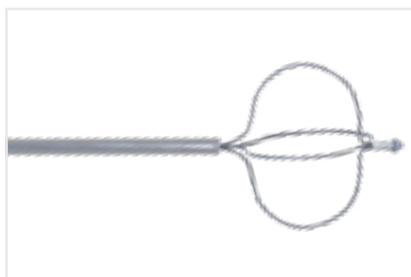
### AXS\_TOME+ SPHINCTEROTOMES

AXS\_tome+ offers you reliable orientation as well as soft and gentle probing thanks to its improved Micro-Tip+ design. A user-friendly short wire port and optimised X-ray visibility make AXS\_tome+ safe and efficient in handling.



### TWIST'N'CATCH STONE EXTRACTION BASKETS

The impressive expansion force and precise control of the basket allow swift capture of stones. Infinite adjustment of basket diameter permits highly flexible use. As a result, gallstones can be retrieved reliably.



### KENA BILIARY STENT

The Kena series allows simple and precise placement of the prosthesis as a result of the perfect interplay between bending strength and flexibility. Even multistenting with different prosthetic diameters (8.5 and 10 Fr) is extremely efficient with the one-for-all placement system.



For further information please scan the QR code.

\* Manufactured by FUJIFILM medwork GmbH.



# DOUBLE BALLOON ENDOSCOPY SYSTEM



## EXAMINING THE SMALL INTESTINE

By developing the double balloon endoscope, Fujifilm pioneered examining and treating the entire small intestine. The two-balloon system provides an unparalleled level of detail and is, to this day, the gold standard in examination of the small intestine. It is also commonly used in ERCPs with altered conditions post-surgery.



**ONE-TOUCH CONNECTOR**

**PUSH & PULL SYSTEM**

**ENLARGED WORKING CHANNEL OF 3.2 mm FOR EFFICIENT TREATMENT**





## DOUBLE BALLOON ENDOSCOPY

**Double balloon endoscopy is a technique that allows the whole length of the small intestine to be visualised, opening doors to many therapeutic interventions.**

Fujifilm developed the DBE system to meet the clinical needs for more precise and efficient diagnoses and treatment.



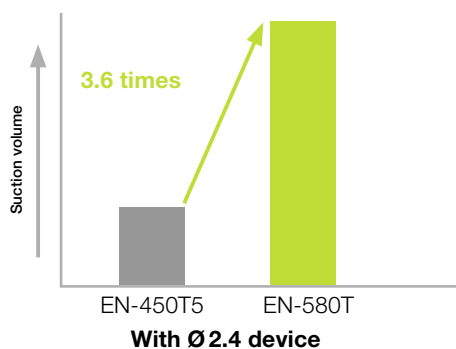
Oral insertion (small intestine)



Anal insertion (small intestine)

### Working channel with 3.2mm diameter

The enlarged 3.2 mm working channel suits procedures such as haemostasis and balloon dilation. As it enables blood or mucus to be aspirated while a therapeutic device is inserted, quicker haemostasis is possible. The large working channel is also designed for easier insertion and removal of a balloon catheter before and after dilation of stricture.



The 3.2 mm working channel provides greater suction performance than conventional models.\*



### Specially designed one-touch connector and relocated balloon air feed inlet for better operability

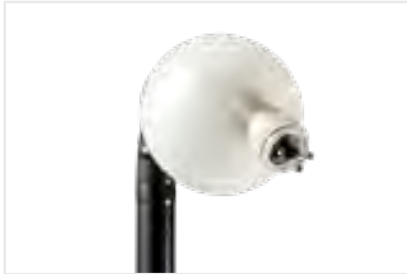
The balloon air feed inlet has been relocated from the control portion to the connector portion, creating a better examination environment. Also, a one-touch connector (TY-06 or TY-500) specially designed for the balloon air feed inlet on the endoscope is provided, simplifying the preparation.

\* According to Fujifilm data





## EN-580T ENTEROSCOPE Therapeutic Type



Viewing direction	0° (Forward)
Field of view	140°
Observation range	2–100mm
Bending capability	Up 180°/Down 180° Right 160°/Left 160°
Ø Distal end	9.4 mm
Ø Flexible portion	9.3mm
Ø Working channel	3.2mm
Working length	2,000mm
Total length	2,300mm

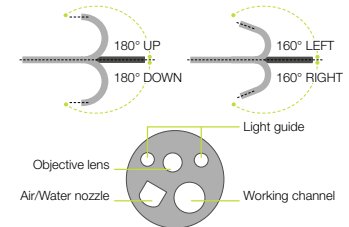
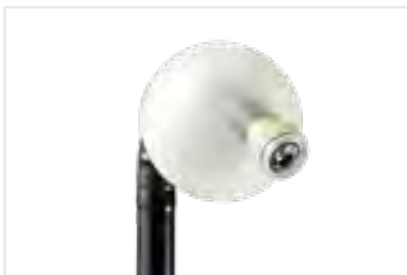


Image area & forceps entry position

## EN-580XP ENTEROSCOPE Slim Type



Viewing direction	0° (Forward)
Field of view	140°
Observation range	2–100mm
Bending capability	Up 180°/Down 180° Right 160°/Left 160°
Ø Distal end	7.5 mm
Ø Flexible portion	7.7mm
Ø Working channel	2.2mm
Working length	2,000mm
Total length	2,300mm

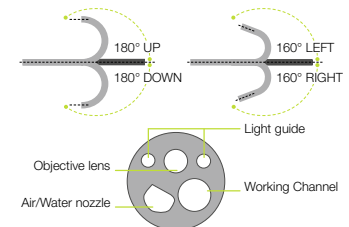
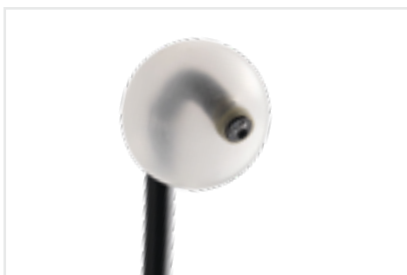


Image area & forceps entry position

## EI-580BT SHORT DOUBLE BALLOON ENDOSCOPE



Viewing direction	0° (Forward)
Field of view	140°
Observation range	2–100mm
Bending capability	Up 180°/Down 180° Right 160°/Left 160°
Ø Distal end	9.4 mm
Ø Flexible portion	9.3mm
Ø Working channel	3.2mm
Working length	1,550mm
Total length	1,850mm

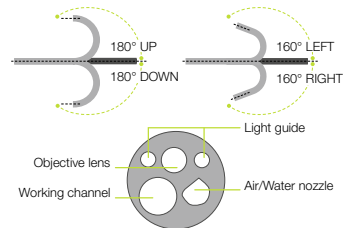


Image area & forceps entry position

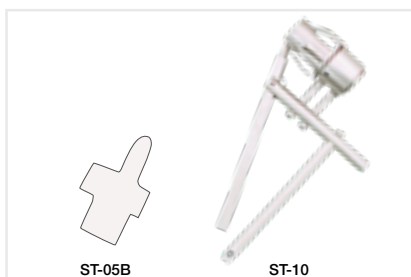
## PB-30 BALLOON CONTROL UNIT

To be used to control pressure inside the balloons which are inflated and deflated during DBE examinations.



<b>Maximum flow rate of pump</b>	170ml±50ml/10 sec.
<b>Set pressure accuracy</b>	±2 kpa
<b>Set pressure of balloon</b>	5.6 kpa
<b>Weight</b>	7.0 kg (Main unit) 0.4 kg (Remote switch)
<b>Power</b>	AC100~240V 50/60 Hz/0.8A
<b>Dimensions (W x H x D)</b>	145 x 170 x 410 mm

## ST-05B/ST-10 BALLOON SETTING TOOLS



To fix the balloon and the rubber bands.





## 530 SERIES ENDOSCOPES



### HIGH STANDARD

Natural colour reproduction, a high-resolution Super CCD chip and good bending operability are just three of the many advantages presented by the 530 series endoscopes.

They can be run with the ELUXEO™ VP-7000 processor, the ELUXEO™ Lite EP-6000 or the EPX-3500 HDTV processor in Full HD quality.



### EXCELLENT IMAGE QUALITY

**EQUIPPED WITH EXCLUSIVELY  
DEVELOPED SUPER CCD TECHNOLOGY**

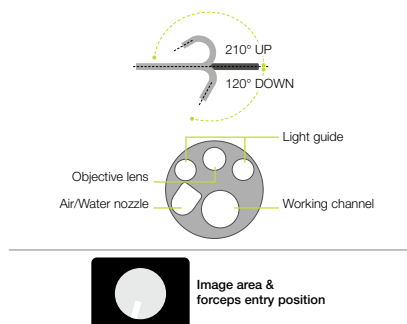
## EG-530NP VIDEO GASTROSCOPE Ultra Slim Type



The EG-530NP gastroscope is slimmed down as much as possible providing a 4.9mm distal end (5.1 mm in the flexible portion) which supports a soft transnasal insertion. This ultra slim endoscope is also equipped with dual light guides and a 2.0mm working channel.



Viewing direction	0° (Forward)
Field of view	120°
Observation range	3–100mm
Bending capability	Up 210°/Down 120°
Ø Distal end	4.9mm
Ø Flexible portion	5.1 mm
Ø Working channel	2.0mm
Working length	1,100mm
Total length	1,460mm



### Improved imaging

thanks to high-resolution Super CCD chip.

## B1 DROPLET REDUCTION MOUTHPIECE

Mouthpiece with sponge layers and drape to reduce droplets from the oral cavity.



reddot winner 2021



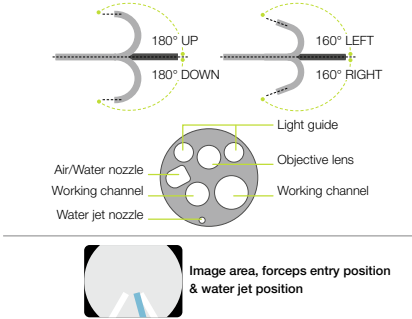
**EC-530DL** VIDEO COLONOSCOPE *Therapeutic Treatment*



These lower GI tract endoscopes have two working channels (3.8 mm/2.8 mm), intended to be useful for treatments such as EMR.



<b>Viewing direction</b>	0° (Forward)
<b>Field of view</b>	140°
<b>Observation range</b>	3–100mm
<b>Bending capability</b>	Up 180°/Down 180° Right 160°/Left 160°
<b>Ø Distal end</b>	12.8mm
<b>Ø Flexible portion</b>	12.8mm
<b>Ø Working channel</b>	3.8/2.8mm
<b>Working length</b>	1,690mm
<b>Total length</b>	2,005mm



## ESD SOLUTIONS

### ST HOOD

ST Hoods have a transparent, small caliber tip, ensuring a clear field of view.



#### ST Hood features

- Provide a clear and stable view by maintaining the distance between the distal end and mucosal layer
- Side holes for better fluid drainage which results in a clear endoscopic view
- Sterile and single-use for better infection control
- Guide ditch to stabilise endotherapeutic devices

### CLUTCHCUTTER ESD TOOL

All stages of ESD can be performed with this 3-in-1 tool, from marking to making incisions and coagulating.



Identifier	-35-	-50-
Jaw length	3.5mm	5.0mm
Working length	1,800mm	
Maximum Ø of insertion portion	2.7mm	
Ø Working channel of compatible endoscope	2.8mm or more	

**ClutchCutter**

### PURASTAT HAEMOSTAT\*

THIRD PARTY PRODUCT

PuraStat is a slightly viscous solution of synthetic peptides. When in contact with blood, the synthetic peptide self-assembles into a 3-dimensional matrix which rapidly coats the bleeding point leading to haemostasis.



1 ml/3 ml/5 ml haemostatic gel syringe

\* PuraStat is a trademark for 3-D Matrix.





## VIDEO PROCESSORS & LIGHT SOURCES



### FOR DEMANDING PROCEDURES

Our long-standing experience in developing imaging technologies also provides you with an excellent processor for your application at all times. All models offer digital image processing and video interfaces. With ergonomic user controls, these video processors save valuable time and facilitate more comfortable examinations.

Design Award Winner  
ELUXEO™ BL-7000 and VP-7000



Video Processor VP-7000



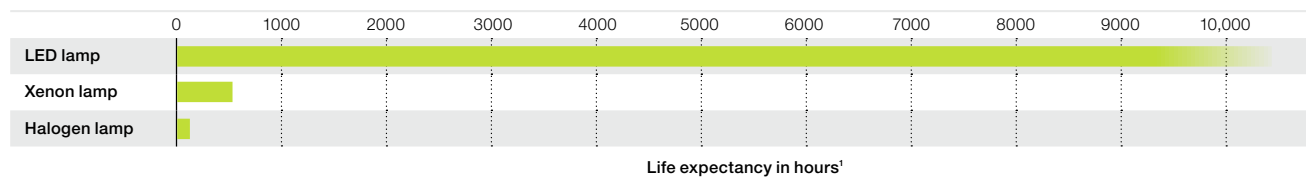
Light Source BL-7000



## BL-7000 ELUXEO™ 4-LED LIGHT SOURCE with High Durability

A reliable light source is a prerequisite for use in large clinics as well as smaller outpatient centres to ensure procedures can take place as scheduled. To achieve high standards, the eco-friendly ELUXEO™ 7000 system features the 4-LED Multi Light™ Source, which outperforms conventional Xenon or Halogen light sources: With 10,000 hours<sup>1</sup> average life expectancy for the LED lights, the ELUXEO™ system has far longer durability while having much lower energy consumption, resulting in better cost-efficiency.

Light source	4-LED
Air supply pump	High, Mid, Low, Off
Power rating	100–240V, 50/60Hz, 1.2–0.7A
Dimensions (W x H x D)	390 x 155 x 485 mm (including projection)
Weight	12.0 kg
Optical radiation safety	Class 1 LED product



Our confidence in the ELUXEO system BL-7000 is reflected by Fujifilm's **Durability Warranty**, which covers any defect of the LED light source unit that is attributable to a manufacturing or assembly fault under normal use for a period of five years or 10,000 operating hours, whichever comes first.<sup>1</sup>

## VP-7000 ELUXEO™ HIGH-PERFORMANCE VIDEO PROCESSOR



The ELUXEO™ video processor VP-7000 enables you to make use of the many features provided by Fujifilm's wide range of endoscopes along with the 4-LED illumination system and its LCI and BLI visualisation modes. In addition to the ELUXEO 700 series endoscopes, it is also compatible with the 600 and 500 series of endoscopes. The processor creates high-quality images displayed in full HD on the monitor. Automatic back-up mode for data storage is integrated and the processor is DICOM compatible.

Compatible endoscopes	700/600/500 series
Output	DVI-D x2, DVI-I x1, HD-SDI x2, RGB-TV x1, S VIDEO x1, VIDEO x1
Input	1 channel PoP
External memory	USB Flash Drive
Power rating	100–240V, 50/60Hz, 0.8–0.5A
Dimensions (W x H x D)	390 x 110 x 485 mm (including projection)
Weight	9.0 kg

<sup>1</sup> This Warranty is only valid according to the terms and conditions of the Durability Warranty Policy.

**EP-6000 ELUXEO™ Lite** VIDEO PROCESSOR with Built-in LED Light Source

The ELUXEO™ Lite EP-6000 combines a reliable 3-LED light source with a processor that enables you to make use of the many features provided by Fujifilm's wide range of endoscopes. Available combined with the 700 series LCI (Linked Color Imaging) and BLI (Blue Light Imaging) visualisation modes.

Due to the use of economical LED lamps with a long durability this system is very eco-friendly. It is also compatible with the 600 and 500 series of endoscopes. The ELUXEO™ Lite EP-6000 creates quality images and videos displayed in full HD on the monitor.

Automatic back-up mode for data storage is integrated and the processor is also DICOM compatible.

Light source	3-LED
Air supply pump	High, Mid, Low, Off
Compatible endoscopes	700, 600 and 500 series endoscopes*
Output	DVI-D x2, RGB-TV x1, S VIDEO x1, VIDEO x1
External memory	USB Flash Drive
Power rating	100–240V, 50/60Hz, 2.0–1.1A
Dimensions (W x H x D)	395 x 210 x 485 mm (including projection)
Weight	15.0 kg
Optical radiation safety	Class 1 LED product

Available observation modes	White Light	BLI	LCI	FICE
700 series	●	●	●	●
500/600 series	●			●



## EPX-3500HD VIDEO PROCESSOR



The EPX-3500HD, with its excellent image processing technology, is intended to be useful for endoscopic diagnostics and therapies. It provides clear images by using several functions such as structure enhancement, automatic light control and Anti-Blur. The EPX-3500HD is compatible with our full range of 500 and 600 series endoscopes.

Three patterns of FICE, which enhance the colour tone of the endoscopic images by image processing, are pre-defined and can be easily operated by pressing the endoscope switch button. Thanks to the Anti-Blur function, all captured images are documented in razor-sharp detail.

During the archiving stage, the video processor automatically selects and saves the cleanest image.

### VP-3500HD Processor

<b>Compatible endoscopes</b>	600/500 series
<b>Output</b>	DVI-D x2, RGB-TV x1, S VIDEO x1, VIDEO x1
<b>External memory</b>	USB Flash Drive
<b>Power rating</b>	100–240V±10%, 50/60Hz, 1.0–0.3 A*
<b>Dimensions (W x H x D)</b>	390 x 105 x 460 mm
<b>Weight</b>	8.0 kg

### XL-4450 Light Source

<b>Light source</b>	300W Xenon lamp LMP-002
<b>Air supply pump</b>	High, Mid, Low, Off
<b>Power rating</b>	230V±10%, 50Hz, 1.7A
<b>Dimensions (W x H x D)</b>	390 x 155 x 450 mm
<b>Weight</b>	15.0 kg



\* Less than 90VA.



# ULTRASONOGRAPHY SYSTEMS WITH NUMEROUS MODES



## OBSERVATION & THERAPY

Ultrasonography changed the clinical approach to patients with digestive and respiratory diseases. Today, ultrasonography is being used to examine and visualise internal body structures for possible lesions, supporting definitive diagnosis and helping doctors decide on suitable treatment approaches.



## VARIOUS IMAGING MODES

## SU-1 ENDOSCOPIC ULTRASONIC PROCESSOR

<b>Power supply</b>	Power rating	AC 100–240 V
	Frequency rating	50 Hz/60 Hz
	Power consumption	2.0–1.2 A
<b>Size</b>	Dimensions (W x H x D)	390 x 135 x 485 mm
	Weight	13.0 kg
<b>Ultra-sonography image display</b>	Scanning method	Electronic scanning
	Probe types	Curved linear array/radial
	Scanning modes	B/M/CD/PD/PW/THI/CH/F-FLOW
	Special modes	Elastography/CHI
<b>Received signal processing</b>	Received gain correction	0–100, 2-step
	STC	6-step gain settings per depth
	Sound speed correction	Full screen ROI settings
	Dynamic Range	40–100, 5-step
<b>Display</b>	PinP	Endoscopic/ultrasound imaging
	Observation screen	Hospital, date, time, patient
<b>Applicable</b>	Curved linear array	EG-580UT, EG-530UT2, EB-530US
	Radial	EG-580UR, EG-530UR2
<b>Frequency</b>		5 MHz, 7.5 MHz, 10 MHz, 12 MHz
<b>Image input terminal</b>	DVI image input terminal	1
<b>Image output terminals</b>	Video terminal	1
	S-video terminal	1
	RGB TV terminal	1
	DVI terminal (digital)	1
	DVI terminal (digital/analog)	1
	HD-SDI terminal	2
<b>Sound output</b>	RCA terminal	1
<b>Control terminal</b>	Remote terminal	2
	Remote terminal (input)	1
	RS-232C terminal	1
	Keyboard terminal	1
	Foot switch terminal	1
	Network terminal	1
<b>Measurement function</b>	Measurement items	Distance, perimeter, area, volume, flow speed
<b>Storage</b>	Data formats	JPEG, TIFF, DICOM, AVI
	Storage device	Internal/external memory (USB)
	Cine memory	Storage/playback
<b>Accessories</b>		Keyboard and foot switch

<b>Image Modes</b>	B-Mode	Fundamental Mode
	THI	Tissue Harmonic Imaging
	CH	Compound Harmonic Imaging
	CHI	Contrast Harmonic Imaging
<b>Doppler Mode</b>	PW	Pulse Wave Doppler
	CD	Colour Doppler
	PD	Power Doppler
	F-Flow	
<b>Other</b>	M-Mode Elastography	Motion Mode
<b>Imaging</b>	PinP	Picture-in-picture (realtime)
	Biopsy	Visibility of puncture range
<b>Storing</b>	Image Store	via keyboard/foot switch/endoscope button
	Clip Store	via keyboard/foot switch/endoscope button
	Internal SSD	JPEG, TIFF, DICOM, AVI
	USB	JPEG, TIFF, DICOM, AVI
	FTP	JPEG, TIFF, DICOM, AVI
	DICOM	JPEG, TIFF, DICOM



### EUS Tower: All-in-one concept

Years of research and development to reduce patient discomfort and improve operator efficiency during endoscope examinations led to the development of Sonart, the integration of ultrasonographic diagnosis and endoscopy systems. With the aim of supporting accurate diagnoses, proprietary image processing technology integrates improved endoscope manoeuvrability and insertion capability. The compact one-cart system supports various applications.



Easy-to-clean flat keyboard for use by touch panel and touch pad, also available with trackball keyboard





## EG-580UT ULTRASONIC ENDOSCOPE **Curved Linear Array Scan**



The endoscope with a small bending radius and short rigid section enables easy access to the targeted areas. A wide puncture range enables FNA (Fine Needle Aspiration Biopsy) from a variety of positions to achieve broader accessibility. The 40° front oblique view and 140° endoscopic field of view is expected to reduce stress during the insertion process. Combined with powerful 150° up-angulation, the endoscope is suitable for both observation and therapeutic procedures.



### Endoscopic functions

<b>Viewing direction</b>	40° (Forward oblique)
<b>Observation range</b>	3–100 mm
<b>Field of view</b>	140°
<b>Ø Distal end</b>	13.9mm
<b>Ø Flexible portion</b>	12.4 mm
<b>Bending capability</b>	Up 150°/Down 150° Right 120°/Left 120°
<b>Working length</b>	1,250mm
<b>Overall length</b>	1,550mm
<b>Ø Working channel</b>	3.8mm

### Ultrasonic functions

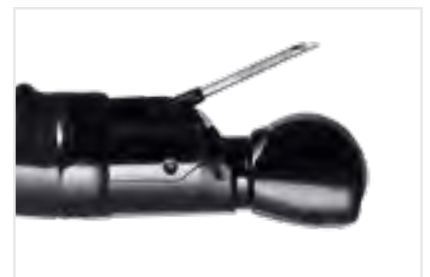
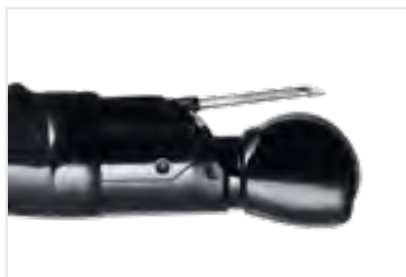
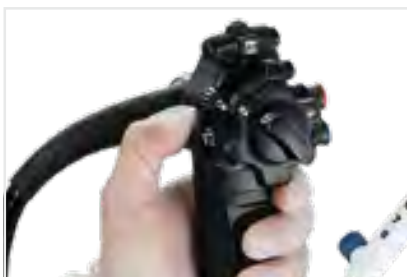
<b>Scanning mode</b>	Colour Doppler, Power Doppler, Pulse Doppler, B mode, M mode, F-Flow
<b>Scanning method</b>	Electronic curved linear array scan
<b>Scanning angle</b>	150° (in combination with SU-1)
<b>Frequency</b>	5MHz/7.5MHz/ 10MHz/12MHz



**40° front oblique,  
140° endoscopic field**

## FORCEPS ELEVATOR ASSIST

The Forceps Elevator Assist function ensures a steady maximum UP forceps elevation when the lever on the control portion is pulled down completely and clicks into place. This function reduces strain on the thumb caused by repeatedly operating the lever during procedures. It also supports flexible and subtle endoscopic operations during therapeutic procedures and stable puncture trajectory.



**Hold maximum UP forceps elevator**

**EG-580UR** ULTRASONIC ENDOSCOPE *Radial Scan*



The shorter rigid section with a slim distal end of 11.4 mm, an upward bending capability of 190° and a direct forward view are designed to be useful and operate nearly the same as a standard gastroscope. The enhanced manoeuvrability supports the approach in retroflex observation of fundus and cardia.

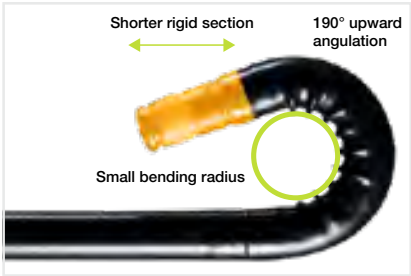


Endoscopic functions

Viewing direction	0°
Observation range	3–100 mm
Field of view	140°
Ø Distal end	11.4mm
Ø Flexible portion	11.5mm
Bending capability	Up 190°/Down 90° Right 100°/Left 100°
Working length	1,250mm
Overall length	1,550mm
Ø Working channel	2.8mm

Ultrasonic functions

Scanning mode	Colour Doppler, Power Doppler, Pulse Doppler, B mode, M mode, F-Flow
Scanning method	Electronic radial scan
Scanning angle	360° (in combination with SU-1)
Frequency	5MHz/7.5MHz/ 10MHz/12MHz



Great approach ability





# MONITORS



THIRD  
PARTY  
PRODUCT

## FOR SHARP IMAGES

Fujifilm's medical equipment incorporates advanced video technology. High-performance monitors used in conjunction with Fujifilm endoscopes reproduce clear, natural images.



**EIZO CURATOR EX 3241:  
FOR A 4K RESOLUTION IN  
COMBINATION WITH THE  
ELUXEO™ SYSTEM**

## EIZO 32" CURATOR (UHD) EX3241\*

### 32" LCD WITH 4K RESOLUTION

LED backlight with high brightness of max. 700 cd/m<sup>2</sup>, high-resolution of 3840 x 2160 px (4K), optical bonding for reduced reflections, Smart Resolution Sparse Coding (S.R.S.C.) for high-definition images and enhanced sharpness.

<b>Input signal</b>	Display Port (HDCP 1.3), HDMI (HDCP 2.2/1.4), BNC (12G-SDI), BNC (3G-SDI), DVI-D x 2 (HDCP 1.4)
<b>Output signal</b>	BNC (12G-SDI), BNC (3G-SDI), DVI-D
<b>Dimensions (W x H x D)</b>	760 x 463 x 87 mm
<b>Weight</b>	12.8 kg

NEW

## EIZO 32" CURATOR EX3220\*

### 32" LCD

LED backlight with high brightness of max. 650 cd/m<sup>2</sup>, high-definition, full multi-modality, degree of protection IP45 (front), IP32 (rear)

<b>Input signal</b>	BNC (3G-SDI) x 2, DVI-D x 2 (HDCP 1.4), D-Sub 15 pin (mini), BNC (RGB C-Sync or Component), S-Video, BNC (Composite)
<b>Output signal</b>	BNC (3G-SDI) x 2, DVI-D, BNC (RGB C-Sync or Component), S-Video, BNC (Composite)
<b>Dimensions (W x H x D)</b>	760 x 463 x 99 mm
<b>Weight</b>	9.9 kg

NEW

## EIZO 27" CURATOR EX2721\*

### 27" COLOR LCD

LED backlight with high brightness of max. 900 cd/m<sup>2</sup>, high-definition, full multi-modality.

<b>Input signal</b>	BNC (3G-SDI), DVI-D x 2 (HDCP 1.4), D-Sub 15 pin (mini), S-Video, BNC (Composite)
<b>Output signal</b>	BNC (3G-SDI), DVI-D, S-Video, BNC (Composite)
<b>Dimensions (W x H x D)</b>	660 x 400 x 87 mm
<b>Weight</b>	8.5 kg

## EIZO 26" COLOUR LCD\*

### 26" HD-TYPE LCD

LED backlight with high brightness of max. 700 cd/m<sup>2</sup>, high-definition, full multi-modality, displays up to three video sources simultaneously.

<b>Input signal</b>	BNC (3G-SDI) x 2, DVI-D x 2 (HDCP 1.4), D-Sub 15 pin (mini), BNC (RGB C-Sync or Component), S-Video, BNC (Composite)
<b>Output signal</b>	BNC (3G-SDI) x 2, DVI-D, BNC (RGB C-Sync or Component), S-Video, BNC (Composite)
<b>Dimensions (W x H x D)</b>	643 x 396 x 83 mm
<b>Weight</b>	8.4 kg

\* Manufactured by EIZO Corporation, Japan.  
Monitors might not be available in all countries. Please check with your local distributor.



## OUR COMMITMENT TO **SERVICE**



### THINK GLOBALLY – ACT LOCALLY

Our service strategy aims for the highest customer satisfaction by offering a comprehensive service and being close to the local markets.

Eight service centers with the headquarters in Willich (Germany) are spread throughout Europe and employ highly qualified in-house technicians and experts in the field, allowing faster and better coverage for all customer needs.

**Our service network includes:**

Willich (GER)  
Montigny, Toulouse (FRA)  
Barcelona, Porto (IBERIA)  
Milano (ITA)  
Prague (CZE)  
Istanbul (TUR)

**Our full comprehensive service contract covers:**

In-house repair service  
All repair costs  
Highly qualified field service engineers  
Large variety of loan devices  
Maintenance service and damage prevention  
Support for reprocessing and on-site consulting

POWERED BY PARTNERSHIP

Fujifilm, a pioneer in the field of diagnostic imaging and information systems for medical institutions, operates in about 50 group companies in Europe and employs over 4,500 people engaged in R&D, manufacturing, sales and service. Dialogue and continuous partnership have a special significance for us and at our locations. Our products and technologies are constantly being developed in agreement with you to meet your specific needs. Your contact partners are available for you – no matter where you are. Living this kind of partnership inspires us to do all we can to make the world a little better.







# PRODUCT **RECOMMENDATIONS**

Recommended endoscopes for different gastrointestinal segments	Diseases	Special endoscopes to cope with these diseases	Special features of the special endoscope	Endoscopes for further diagnosis
<b>Oesophagus</b>				
EG-760R EG-760Z EG-760CT EG-740N EI-740D/S EG-720R EG-600WR EG-580NW2 EG-580UR EG-580UT EG-530NP	Zenker diverticle	EG-760CT; EI-740D/S	WCH* 3.8; dual channel	
	Other oesophagus diverticle	EG-760CT; EI-740D/S	WCH 3.8; dual channel	
	Barrett oesophagus	EG-760CT; EG-760Z; EG-760R; EG-720R; EG-600WR	Magnification, high-quality images	EG-580UT/UR
	Oesophagitis	EG-760CT; EG-760Z; EG-760R; EG-720R; EG-600WR	Magnification, high-quality images	
	Mallory Weiss syndrome	EG-760CT	WCH 3.8	
	Oesophagus varices	2 endoscopes prepared		
	Tumors	EG-760CT; EG-760Z; EG-760R; EG-720R; EG-600WR	Magnification, high-quality images	EG-580UT/UR
	Squamous cell carcinoma	EG-760CT; EG-760Z; EG-760R; EG-720R; EG-600WR	Magnification, high-quality images	EG-580UT/UR
	Achalasia/POEM	EG-760R; EG-760CT	WCH 3.8	
	Stenosis	EG-740N; EG-580NW2; EG-530NP	Small outer diameter	EG-580UT/UR
<b>Gastro intestinal</b>				
EG-760R EG-760Z EG-760CT EG-740N EI-740D/S EG-720R EG-600WR EG-580NW2 EG-530NP	Gastritis	EG-760Z; EG-760R; EG-720R; EG-600WR	Magnification, high-quality images	
	Dyspepsia	EG-760Z; EG-760R; EG-720R; EG-600WR	Magnification, high-quality images	
	Ulcer ventriculi	EG-760Z; EG-760R; EG-720R; EG-600WR	Magnification, high-quality images	EG-580UT/UR
	Ulcer perforation	EG-760CT; EI-740D/S	WCH 3.8; dual channel	
	Ulcer carcinomas	EG-760Z; EG-760R; EG-720R; EG-600WR	Magnification, high-quality images	EG-580UT/UR
	Ulcer bleeding	EG-760CT; EI-740D/S	WCH 3.8; dual channel	
	Gastro carcinomas	EG-760Z; EG-760R; EG-720R; EG-600WR	Magnification, high-quality images	EG-580UT/UR
	Precancerosis	EG-760Z; EG-760R; EG-720R; EG-600WR	Magnification, high-quality images	EG-580UT/UR
	Stomach exit stenosis	EG-740N; EG-580NW2; EG-530NP	Small outer diameter	
	Vessel aberration	EI-740D/S	WCH 3.8; dual channel	EG-580UT/UR
	Fundus varices	EG-760R; EG-760CT	WCH 3.8	
<b>Duodenum</b>				
EG-760R EG-760Z EG-760CT EG-740N EI-740D/S EG-720R EG-600WR EI-580BT EG-580UT/UR EG-530NP	Duodenitis	EG-760Z; EG-760R; EG-720R; EG-600WR; (EI-580BT)	Magnification, high-quality images, stabilises position	
	Duodenal ulcer	EG-760Z; EG-760R; EG-720R; EG-600WR; (EI-580BT)	Magnification, high-quality images, stabilises position	
	Coeliac disease	EG-760Z; EG-760R; EG-720R; EG-600WR; (EI-580BT)	Magnification, high-quality images, stabilises position	
	Bleeding	EG-760CT; (EI-580BT); EI-740D/S	WCH 3.2; WCH 3.8; dual channel, stabilises position	
	Tumors	EG-760Z; EG-760R; EG-720R; EG-760CT; EG-600WR; (EI-580BT)	Magnification, high-quality images, stabilises position	EG-580UT/UR

Recommended endoscopes for different gastrointestinal segments	Diseases	Special endoscopes to cope with these diseases	Special features of the special endoscope	Endoscopes for further diagnosis
<b>Small Intestine</b>				
<b>EN-580T</b> <b>EN-580XP</b>	Tumors of the small intestine	EN-580T	Bigger working channel	
	Erosive and ulcerated defects	EN-580XP	Small outer diameter	
	Bleeding	EN-580T	Bigger working channel	
	Vessel anomaly	EN-580T	Bigger working channel	
<b>Biliary Tract and Pancreas</b>				
<b>EN-580T</b> <b>EN-580XP</b> <b>EI-580BT</b> <b>EG-580UT/UR</b> <b>ED-580XT</b>	Bile duct stones	EI-580BT; ED-580XT	Stabilises position	EG-580UT/UR
	Cholelithiasis	EI-580BT; ED-580XT	Stabilises position	
	Postoperative alterations	EI-580BT; ED-580XT	Stabilises position	
	Malignant stenosis	EI-580BT; ED-580XT	Stabilises position	EG-580UT/UR
	Tumors of the papilla	EG-760Z; EG-760R; EG-720R; EG-600WR; EI-580BT; ED-580XT	Magnification, high-quality images, stabilises position	
	Environmental tumors	EG-760Z; EG-760R; EG-720R; EG-600WR; EI-580BT	Magnification, high-quality images, stabilises position	EG-580UT/UR
	Infections	EG-760Z; EG-760R; EG-720R; EG-600WR; EI-580BT	Magnification, high-quality images, stabilises position	
<b>Colon</b>				
<b>EC-760ZP-VM/VL</b> <b>EC-760R-VM/VI/VL</b> <b>EC-760P-VM/VL</b> <b>EC-740TM/TL</b> <b>EC-720RM/RI/RL</b> <b>EC-600WM/WI/WL</b> <b>EN-580T</b> <b>EN-580XP</b> <b>EG-580UT/UR</b> <b>EC-530DL</b>	Colorectal polyps	EC-760ZP-VM/VL; EC-760R-VM/VI/VL; EC-760P-VM/VL; EC-740TM/TL; EC-720RM/RI/RL; G-EYE 760R; EC-600WM/WI/WL	Magnification, high-quality images, Smart Bend	
	Flat adenomas	EC-760ZP-VM/VL; EC-760P-VM/VL; G-EYE 760R	Magnification, high-quality images	
	Malignant tumors	EC-760ZP-VM/VL; EC-760P-VM/VL; G-EYE 760R	Magnification, high-quality images	EG-580UT/UR
	Intestinal inflammation	EC-760ZP-VM/VL; EC-760R-VM/VI/VL; EC-760P-VM/VL; EC-720RM/RI/RL; G-EYE 760R; EC-600WM/WI/WL	Magnification, high-quality images	
	Irritable bowel syndrome	EC-760ZP-VM/VL; EC-760R-VM/VI/VL; EC-760P-VM/VL; EC-720RM/RI/RL; G-EYE 760R; EC-600WM/WI/WL	Magnification, high-quality images	
	Ulcerative colitis	EC-760ZP-VM/VL; EC-760R-VM/VI/VL; EC-760P-VM/VL; EC-720RM/RI/RL; G-EYE 760R; EC-600WM/WI/WL	Magnification, high-quality images	
	Crohn's disease	EC-760ZP-VM/VL; EC-760R-VM/VI/VL; EC-760P-VM/VL; EC-720RM/RI/RL; G-EYE 760R; EC-600WM/WI/WL	Magnification, high-quality images	
	Hemorrhoids	2 endoscopes prepared		
	Anal diseases	EC-760P-VM/VL; EC-740TM/TL; G-EYE 760R	Smart Bend	

All endoscopes are compatible with the video processors ELUXEO™ 7000 system, ELUXEO™ Lite EP-6000 and EPX-3500HD.  
All endoscopic ultrasonography systems are compatible with processor SU1.

This overview contains selected information and recommendations and does not purport to be complete.

# Balloon Enteroscopy

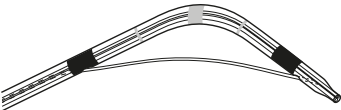
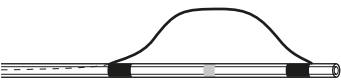


### Conservative and safe approach

Our multi-stage catheter ensures stability during probing. Precision control of the catheter and reliable 11 o'clock orientation facilitate a conservative biliary approach. Owing to a smooth guidewire transition to the micro-tip it is possible to minimise tissue irritation and reduce the risk of complications.

### AXS\_tome Sphincterotomes (2 lumen)




	Product Code	Order No.	Characteristics	Cutting Length	Accepted Guide Wire	Ø Working Channel	Unit
	PAP1-D2-30-21-OL	501853	Micro-Tip, CWT	30 mm	.021"	2,0 mm	2
	PAP1-N2-20-21-OL	501902	B II, CWT	20 mm	.021"	2,0 mm	2
							

# Balloon Enteroscopy


## ERCP cannula



	Product Code	Order No.	Characteristics	Length	Accepted Guide Wire	ø Working Channel	Unit
	CAN1-B3-18-260-35	501856	Filiform, 1 lumen, radiopaque marking	260 cm	.035"	2,0 mm	2

## Stone extraction baskets



	Product Code	Order No.	Characteristics	ø Basket	Length	ø Working Channel	Unit
	BAS1-C1-20-18-260	500025	Half twisted	20 mm	260 cm	2,0 mm	2
	BAS1-C2-25-23-260	500026	Half twisted	25 mm	260 cm	2,8 mm	2

CAUTION: medwork products of the BAS series are perfectly suited for use with other system products in this series. Please note that when combined with products / instruments from other manufacturers substantial functional limitations may occur. A liability of medwork for such cases is excluded.

# Balloon Enteroscopy




## Impressive precision in extreme positions!

Follows every curve: the flexible Manta injection needle even finds its way through highly convoluted regions of the body and yet retains its extreme precision.

Maximum kink-resistance and single handed operation ease the application. The unique needle design makes the injection of fluids noticeably easier.

## MANTA Injection needles

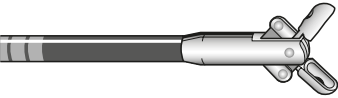


	Product Code	Order No.	Characteristics	Needle ø   Length	Length	ø Working Channel	Unit
	INJ1-A3-05-5-18-240	502488	Latching mechanism, distal needle guide, suitable with Histoacryl	0,5 mm (25 Gauge)   5 mm	240 cm	2,0 mm	5
	INJ1-A3-07-5-18-240	502487	Latching mechanism, distal needle guide, suitable with Histoacryl	0,7 mm (23 Gauge)   5 mm	240 cm	2,0 mm	5

# Balloon Enteroscopy

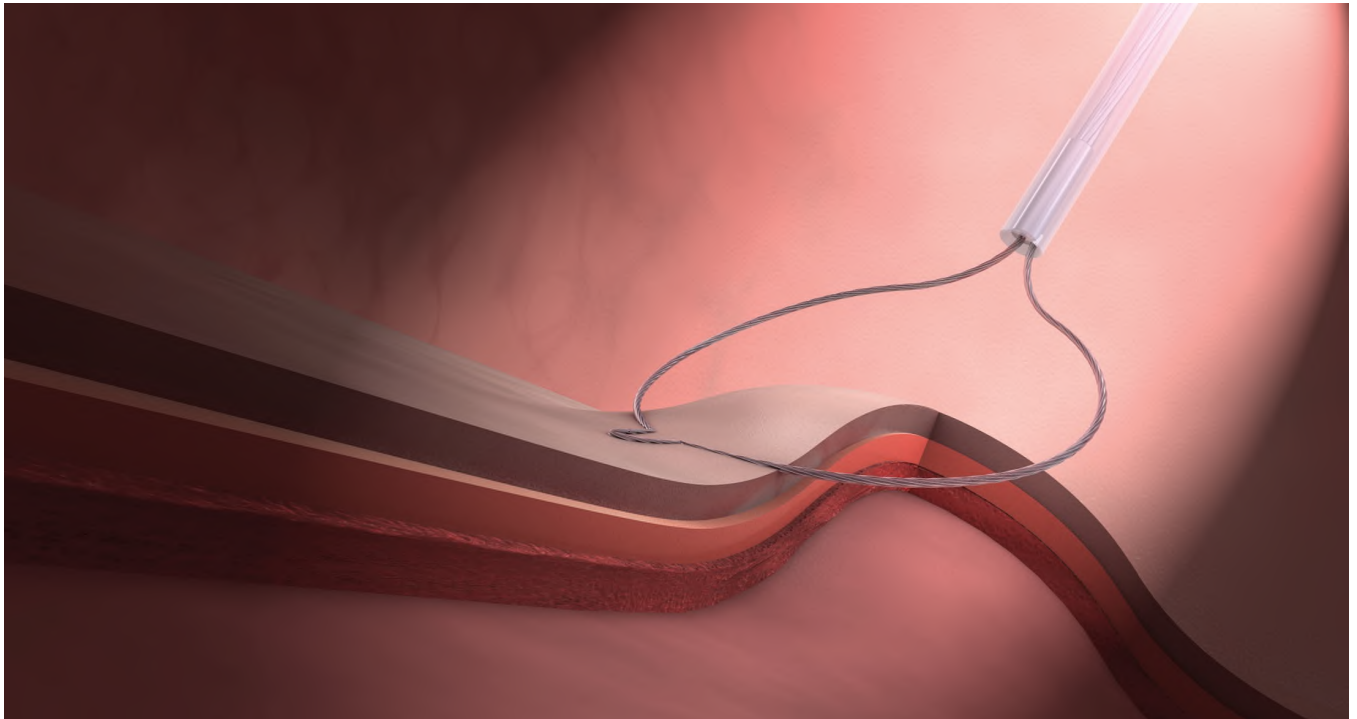
## EndoBite<sup>2</sup> Biopsy forceps



	Product Code	Order No.	Characteristics	ø Jaws	Length	ø Working Channel	Unit
	BI01-C4-18-260	502006	Oval jaws, coated	1,8 mm	260 cm	2,0 mm	10



# Balloon Enteroscopy



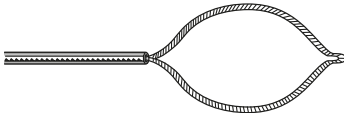
## Compacted Wire Technology (CWT)

Compacted Wire Technology combines the benefits of a mono-filament snare with those of a braided snare:

- ✓ Easier positioning with flat lesions
- ✓ Sparing tissue ablation

## Polypectomy snares (CWT)



	Product Code	Order No.	Characteristics	ø Snare	Length	ø Working Channel	Unit
	POL1-B1-10-23-260-OL	502529	Convex	10 mm	260 cm	2,8 mm	10
	POL1-B1-15-23-260-OL	502530	Convex	15 mm	260 cm	2,8 mm	10
	POL1-B1-20-23-260-OL	502531	Convex	20 mm	260 cm	2,8 mm	10
	POL1-B1-30-23-260-OL	501209	Convex	30 mm	260 cm	2,8 mm	10

# Balloon Enteroscopy

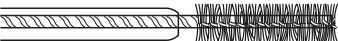


## Conscientious and reliable cleaning

Raccoon cleaning brushes ensure optimal force transmission when cleaning your endoscope. The distal protection head reliably guards the working channel. The dense brush structure makes cleaning even more efficient.

### RACCOON Brush Cleaning brush




	Product Code	Order No.	Characteristics	ø Brush	Length	ø Working Channel	Unit
	CLE1-C2-30-16-280	500463	2 brushes	3 mm	280 cm	2,0 - 2,8 mm	10

# Balloon Enteroscopy






## Guide wire



	Product Code	Order No.	Characteristics	Diameter	Length	Unit
	WIR1-F1-21-500	501911	Straight, Nitinol, coated	.021"	500 cm	2

## FROM SCREENING TO TREATMENT

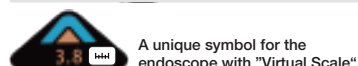
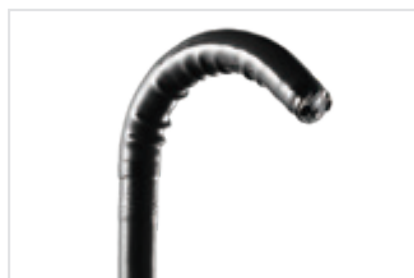
Virtual scale functionality is designed to be used exclusively with the EC-760S-A/M or EC-760S-A/L colonoscope which were developed with the aim to cover clinical needs in colonoscopy during all phases of the procedure.

<b>INSERTION</b> <ul style="list-style-type: none"> <li>Flexibility Adjustment</li> <li>Adaptive Bending</li> <li>Advanced Force Transmission</li> </ul> 	<b>SCREENING</b> <ul style="list-style-type: none"> <li>Linked Color Imaging</li> <li>170° wide field of view</li> <li>CAD EYE<sup>1</sup></li> </ul>  	<b>MEASURING</b> <ul style="list-style-type: none"> <li>Linked Color Imaging</li> <li>Virtual Scale</li> </ul> 	<b>CHARACTERISATION</b> <ul style="list-style-type: none"> <li>Blue Light Imaging</li> <li>CAD EYE<sup>1</sup></li> </ul> 
--	---	---	---

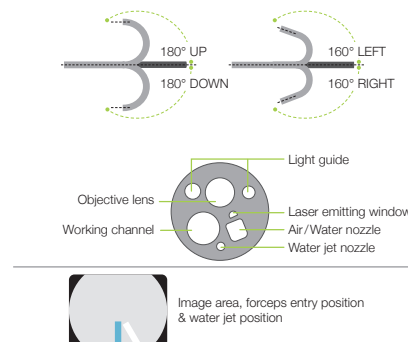
## EC-760S-A/M, L ELUXEO VIDEO COLONOSCOPE



To enable virtual scale functionality, the EC-760S-A/M and EC-760S-A/L colonoscopes are equipped with a red laser, which must be used in combination with SCALE EYE software EW10-VM01 and EX-1 hardware. SCALE EYE can be used in combination with White Light or LCI mode and with CAD EYE.



Field of view	170°
Observation range	2–100mm
Bending capability	Up 180°/Down 180° Right 160°/Left 160°
ø Distal end	12.8mm
ø Flexible portion	12.8mm
ø Working channel	3.8mm
Working length	1,330/1,690mm
Total length	1,650/2,010mm
Virtual Scale	Compatible



## EW10-VM01 SOFTWARE

Virtual Scale	
---------------	---

## EX-1 EXPANSION UNIT

Compatible processor	VP-7000
Compatible software	SCALE EYE (EW10-VM01), CAD EYE (EW10-EC02) Documentation Software (EW10-SC01)
Output	DVI-I x1, DVI-D x1
Input	DVI-I x1
Memory	30 hours of video (Full HD, MP4) and still image material (Full HD or SXGA selectable, TIFF, JPEG)
Power rating	100–240 VAC +/- 10%, 50/60 Hz, 1.25 to 0.60 A
Dimensions (W x H x D)	370.0 x 99.0 x 465.6 mm
Weight	7.1 kg

<sup>1</sup> CAD EYE requires additional software EW10-EC02

## EC-530D DUAL CHANNEL COLONOSCOPE



### PRODUCT INFO

These lower GI tract endoscopes have two working channels (3.8 mm and 2.8 mm), especially useful for treatments such as EMR.

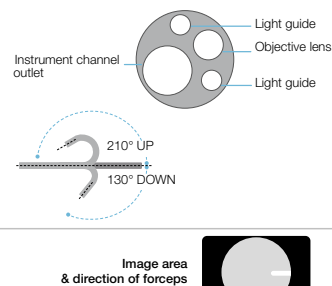
## EB-710P ELUXEO™ VIDEO BRONCHOSCOPE Slim Standard Type



This slim standard video bronchoscope has a distal end diameter of 4.1 mm and a minimum instrument channel diameter of 2.0 mm. It is compatible with VP-7000 and EP-6000 processors. The One-step Connector can be connected to the light source in a single step without the need for additional cables. The EB-710P is compatible with low temperature Hydrogen Peroxide Gas Plasma sterilization.



Field of view	120°
Viewing direction	0° (Forward)
Observation range	2 to 50 mm
Bending capability	Up 210° / Down 130°
Distal end diameter	4.1 mm
Insertion tube diameter	4.1 mm
Minimum diameter of instrument channel	2.0 mm
Working length	600 mm
Total length	880 mm



### Rotation function

The new rotation function enables 120 degree rotation of the insertion portion.



### Enhanced control portion with improved ergonomics

New control portion equipped with a wider grip, new suction valve, and four switches. The new SUC valve SB-606 allows easy holding in loading SUC tube. SB-606 & FV-003 are sterilized and single use.



Illumination suitable for observation using variable LED light intensity.



Brilliant image transmission with reduced noise thanks to a CMOS-chip positioned directly in the tip.



Increased contrast in red colour leads to improved visibility of abnormalities, inflammation and delineation.



The combination of special light wavelengths results in improved contrast imaging for characterisation.



Easy to plug in with an integrated wireless power supply to provide high speed transmission of data.



Combine equipment displaying this logo to ensure that you view HDTV images on your monitor.



## SBV-1 SINGLE USE BRONCHOSCOPE



### PRODUCT INFO

Full range of single-use bronchoscopes for all the clinical needs of critical care and the bronchoscopy suite. A larger working channel bronchoscope for interventional procedures. The plug and play system allows ease of use from standard to difficult or emergency procedures.

**По вопросам продаж и поддержки обращайтесь:**

Алматы (7273)495-231	Калининград (4012)72-03-81	Омск (3812)21-46-40	Сыктывкар (8212)25-95-17
Ангарск (3955)60-70-56	Калуга (4842)92-23-67	Орел (4862)44-53-42	Тамбов (4752)50-40-97
Архангельск (8182)63-90-72	Кемерово (3842)65-04-62	Оренбург (3532)37-68-04	Тверь (4822)63-31-35
Астрахань (8512)99-46-04	Киров (8332)68-02-04	Пенза (8412)22-31-16	Тольятти (8482)63-91-07
Барнаул (3852)73-04-60	Коломна (4966)23-41-49	Петрозаводск (8142)55-98-37	Томск (3822)98-41-53
Белгород (4722)40-23-64	Кострома (4942)77-07-48	Псков (8112)59-10-37	Тула (4872)33-79-87
Благовещенск (4162)22-76-07	Краснодар (861)203-40-90	Пермь (342)205-81-47	Тюмень (3452)66-21-18
Брянск (4832)59-03-52	Красноярск (391)204-63-61	Ростов-на-Дону (863)308-18-15	Ульяновск (8422)24-23-59
Владивосток (423)249-28-31	Курск (4712)77-13-04	Рязань (4912)46-61-64	Улан-Удэ (3012)59-97-51
Владикавказ (8672)28-90-48	Курган (3522)50-90-47	Самара (846)206-03-16	Уфа (347)229-48-12
Владимир (4922)49-43-18	Липецк (4742)52-20-81	Саранск (8342)22-96-24	Хабаровск (4212)92-98-04
Волгоград (844)278-03-48	Магнитогорск (3519)55-03-13	Санкт-Петербург (812)309-46-40	Чебоксары (8352)28-53-07
Вологда (8172)26-41-59	Москва (495)268-04-70	Саратов (845)249-38-78	Челябинск (351)202-03-61
Воронеж (473)204-51-73	Мурманск (8152)59-64-93	Севастополь (8692)22-31-93	Череповец (8202)49-02-64
Екатеринбург (343)384-55-89	Набережные Челны (8552)20-53-41	Симферополь (3652)67-13-56	Чита (3022)38-34-83
Иваново (4932)77-34-06	Нижний Новгород (831)429-08-12	Смоленск (4812)29-41-54	Якутск (4112)23-90-97
Ижевск (3412)26-03-58	Новокузнецк (3843)20-46-81	Сочи (862)225-72-31	Ярославль (4852)69-52-93
Иркутск (395)279-98-46	Ноябрьск (3496)41-32-12	Ставрополь (8652)20-65-13	
Казань (843)206-01-48	Новосибирск (383)227-86-73	Сургут (3462)77-98-35	
Россия +7(495)268-04-70	Киргизия +996(312)-96-26-47	Казахстан +7(7172)727-132	